

DEL RIO, TEXAS

RNAV (GPS) B

APCH CRS 340°	Rwy Idg TDZE Arpt Elev	N/A N/A 1081
------------------	------------------------------	--------------------

AL-111 (USAF)

LAUGHLIN AFB (KDLP)

T * Circling not authorized in sector NE of Rwy 13R-31L.

† MISSED APPROACH: Climbing left turn to 4000 direct ZOBUS, cross SCIFI at 4000, expect radar vectors.

ATIS★
114.4 269.9

DEL RIO APP CON
119.6 259.1

TOWER★
125.2 307.375

GND CON
275.8

CLNC DEL
120.5 335.8

† CAUTION: Missed Approach
Minimum Climb Rate to 4000

Knots	60	120	180	240	300	360
V/V(fpm)	500	1000	1500	2000	2500	3000

ATC Minimum Climb Rate
to SCIF

DME/DME RNP-0.3 NA
RNP APCH
GPS REQUIRED

FOR USE BY 47
FTW ACFT ONLY

RADAR REQUIRED

EMERG SAFE ALT 100 NM 16,000



Fly Visual
340°
2.0 NM

SWANT

MINNM

OTULE
2600

CATEGORY
C CIRCLIN

A
1 600-

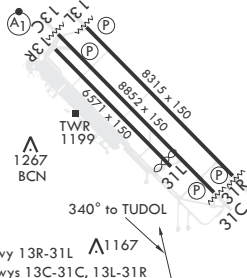
519	

B
(1 000-3

C	
NA	

ELEV 1081

Rwy 31L Idg 6241'



DEL RIO, TEXAS

29°22'N - 100°47'W

LAUGHLIN AFB (KDLEF)

Amdt 5 11OCT18

RNAV (GPS) B

SC-3, 03 DEC 2020 to 31 DEC 2020

SC-3, 03 DEC 2020 to 31 DEC 2020