

## VOR/DME RWY 13C

VORTAC DLF <b>114.4</b> Chan <b>91</b>	APCH CRS <b>118°</b>	Rwy Idg <b>8852</b> TDZE <b>1081</b> Arpt Elev <b>1081</b>
--	-------------------------	--

AL-111 [USAF]

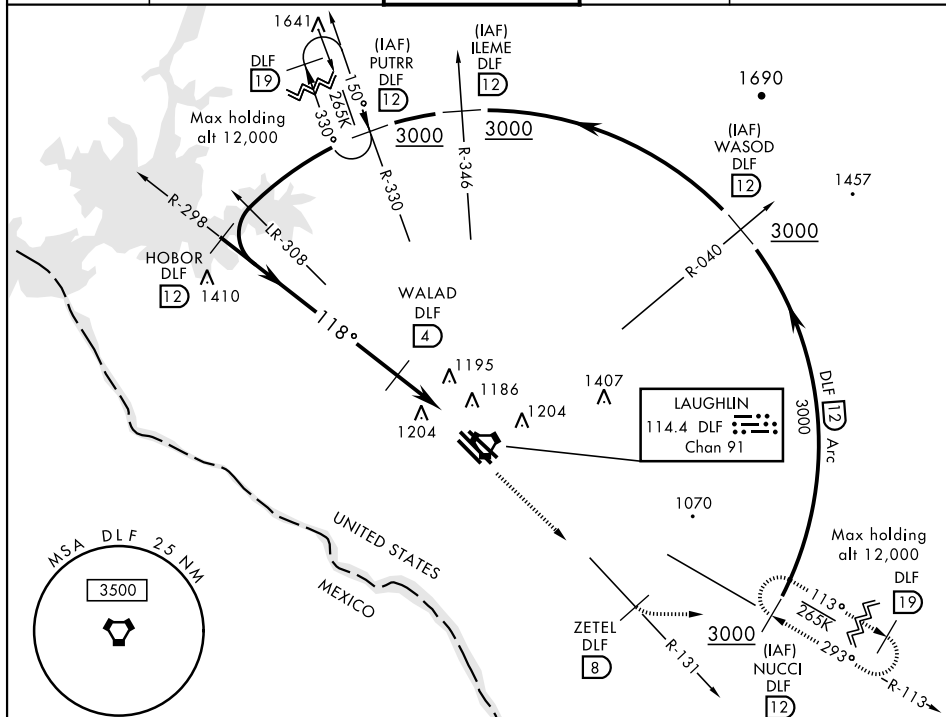
LAUGHLIN AFB (KDLF)

▼ When ALS inop, increase CAT AB RVR to 55 and vis to 1 mile,  
CAT CDE RVR to 60 and vis to 1 1/8 miles.  
\*\* Circling not authorized in sector SW of Rwy 13R-31L.

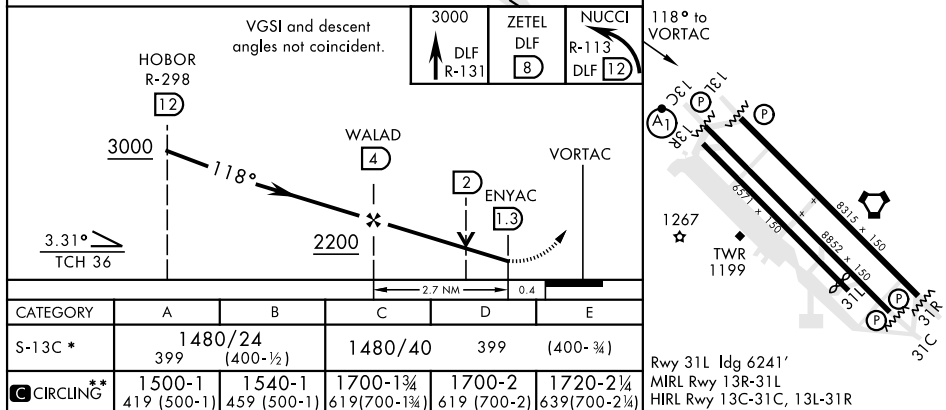


MISSED APPROACH: Climb to 3000 on DLF  
VORTAC R-131 to 8 DME (ZETEL), then turn left  
to intercept DLF R-113 to 12 DME (NUCCI) and hold.

ATIS ★ <b>114.4 269.9</b>	DEL RIO APP CON <b>119.6 259.1</b>	LAUGHLIN TOWER ★ <b>125.2 307.375</b>	GND CON <b>275.8</b>	CLNC DEL <b>120.5 335.8</b>
------------------------------	---------------------------------------	--	-------------------------	--------------------------------



EMERG SAFE ALT 100 NM 16,000 FROM DLF VORTAC



DEL RIO, TEXAS  
Amdt 3 13SEP18

29°22'N-100°47'W

LAUGHLIN AFB (KDLF)

## VOR/DME RWY 13C