

BEAHR THREE ARRIVAL (RNAV)

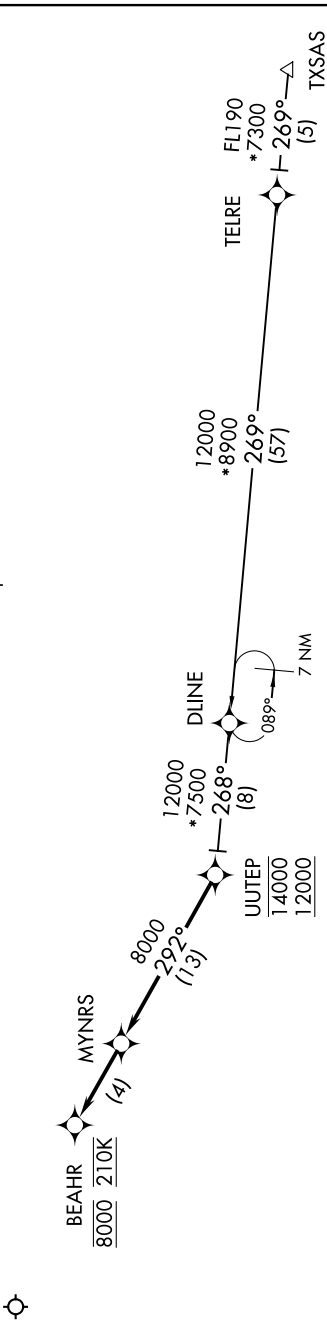
AL-134 (FAA)

EL PASO INTL (ELP)
EL PASO, TEXAS

SC-3, 03 DEC 2020 to 31 DEC 2020

EL PASO D-ATIS
120.0 254.3
EL PASO APP CON
124.25 298.85
ALBUQUERQUE CENTER
135.2 292.15

- NOTE: RADAR required.
- NOTE: RNAV 1.
- NOTE: DME/DME/IRU or GPS required.
- NOTE: Turbojet aircraft only.
- NOTE: Expect RNP approach or RADAR vectors to final approach course prior to BEAHR.



ARRIVAL ROUTE DESCRIPTION

TXSAS TRANSITION (TXSAS:BEAHR3)

From UUTEP on track 292° to MYNRS, then on track 292° to BEAHR, cross BEAHR at 8000 at 210K, expect RNAV (RNP) approach or RADAR vectors to final approach course.

NOTE: Chart not to scale.

BEAHR THREE ARRIVAL (RNAV)

(BEAHR.BEAHR3) 03APR14

EL PASO, TEXAS
EL PASO INTL (ELP)

SC-3, 03 DEC 2020 to 31 DEC 2020