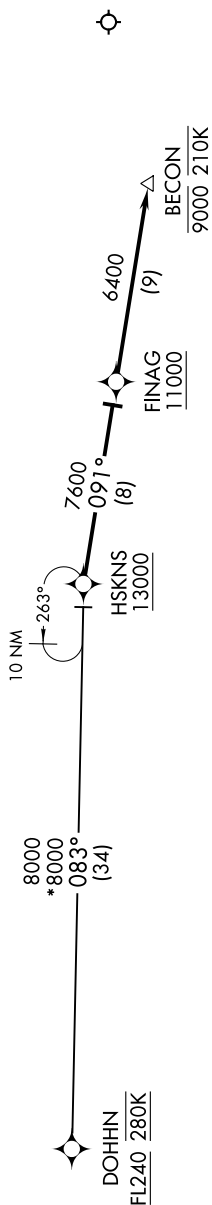


NOTE: Chart not to scale.

z

DOHHN TRANSITION (DOHHN.HSKNS1)

LANDING RWY 4: From HSKNS on track 091° to FINAG, cross FINAG at or above 11000, then on track 091° to BECON, cross BECON at 9000 at 210K, expect RNAV (RNP) approach or RADAR vectors to final approach course.



NOTE: RADAR required.

NOTE: RNAV 1.

NOTE: DME/DME/IRU or GPS required.

NOTE: Turbojet aircraft only.

NOTE: For Non-RNP aircraft, expect RADAR vectors to final approach course.

NOTE: Expect RNP approach clearance or RADAR vectors to final approach prior to BECON.

EL PASO INTL (ELP)