
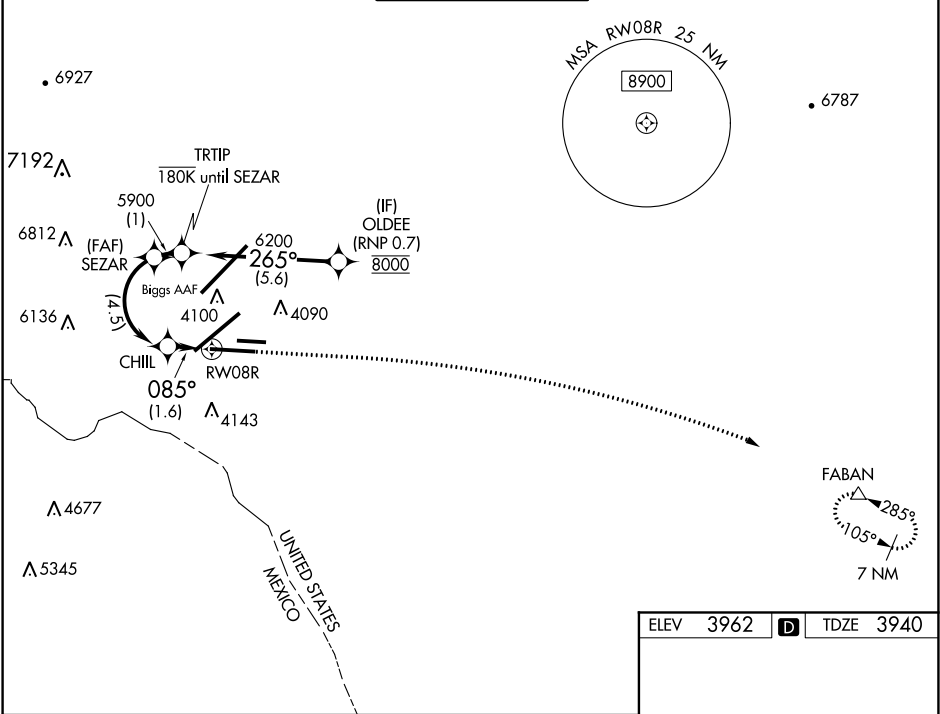


APP CRS	Rwy Idg	9025
085°	TDZE	3940
	Apt Elev	3962

RNAV (RNP) Y RWY 08R  
EL PASO INTL (ELP)

RNP AR APCH. RF required.	MISSED APPROACH: Climb to 4400 then climbing right turn to 7500 direct FABAN and hold.
 For uncompensated Baro-VNAV systems, procedure NA below -5°C or above 54°C.	

D-ATIS 120.0 254.3	EL PASO APP CON 124.25 298.85	EL PASO TOWER 118.3 239.275	GND CON 121.9 348.6	CLNC DEL 125.0 379.1
-----------------------	----------------------------------	--------------------------------	------------------------	-------------------------



VGSi and RNAV glidepath not coincident (VGSi Angle 3.00/TCH 75).					<div>4400</div> <div>7500</div> <div>FABAN</div>	
<div><div>OLDEE</div><div>8000</div><div>265°</div><div>6200</div><div>TRTIP</div><div>SEZAR</div><div>5900</div><div>CHILL</div><div>4477</div><div>RW08R</div><div>085°</div><div>GP 3.00° TCH 50</div><div>5.6 NM</div><div>1 NM</div><div>4.5 NM</div><div>1.6 NM</div><div>CATEGORY</div><div>A</div><div>B</div><div>C</div><div>D</div><div>RNP 0.20 DA</div><div>4193-¾</div><div>253 (300-¾)</div><div>RNP 0.30 DA</div><div>4234-⅞</div><div>294 (300-⅞)</div><div>AUTHORIZATION REQUIRED</div></div>						
<div><div>085° to RW08R</div><div>12070 X 150</div><div>0.3% DOWN</div><div>5499 X 75</div><div>0.5% UP</div><div>0.3% DOWN</div><div>26L 26R</div><div>TWR 4105</div><div>2025 X 150</div><div>AS</div></div>						