

APP CRS	Rwy Idg	12020
222°	TDZE	3950
	Apt Elev	3962

RNAV (RNP) Z RWY 22

EL PASO INTL (ELP)

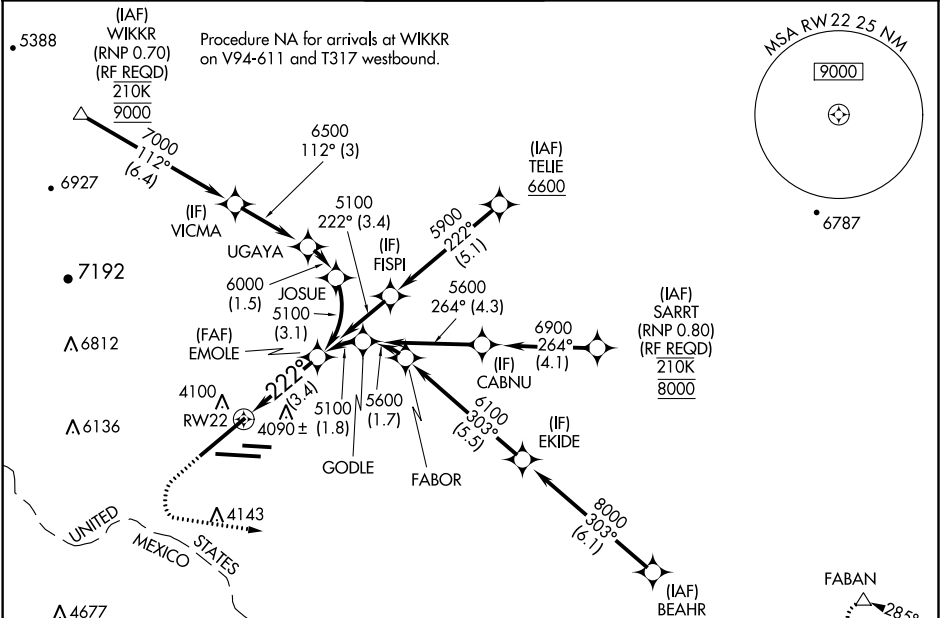
RNP AR APCH.

▼ For uncompensated Baro-VNAV systems, procedure NA below -8°C or above 54°C. For inop ALS, increase RNP 0.10 all Cats visibility to RVR 4000 and RNP 0.30 all Cats visibility to RVR 4500.

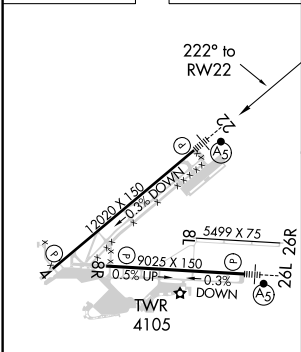
MALSR

MISSED APPROACH: Climb to 4400 then climbing left turn to 7500 direct FABAN and hold.

D-ATIS	EL PASO APP CON	EL PASO TOWER	GND CON	CLNC DEL
120.0 254.3	124.25 298.85	118.3 239.275	121.9 348.6	125.0 379.1



ELEV	3962	TDZE	3950
------	------	------	------



4400 ↑	7500 ↙	FABAN △		
VGSI and RNAV glidepath not coincident (VGSI Angle 3.00/TCH 70).			EMOLE 5100	
RW22 ↙			222°	5100
See planview for multiple IF locations.			GP 3.00° TCH 55	
3.4 NM				
CATEGORY	A	B	C	D
RNP 0.10 DA	4200/24		250 (300-½)	
RNP 0.30 DA	4270/27		320 (400-⅝)	

MIRL Rwy 8L-26R
REIL Rws 4 and 8R
HIRL Rws 4-22 and 8R-26L

AUTHORIZATION REQUIRED

SC-3, 03 DEC 2020 to 31 DEC 2020

SC-3, 03 DEC 2020 to 31 DEC 2020