

RNAV (GPS) X RWY 4  
EL PASO INTL (ELP)

APP CRS	Rwy Idg	12020
042°	TDZE	3923
	Apt Elev	3962

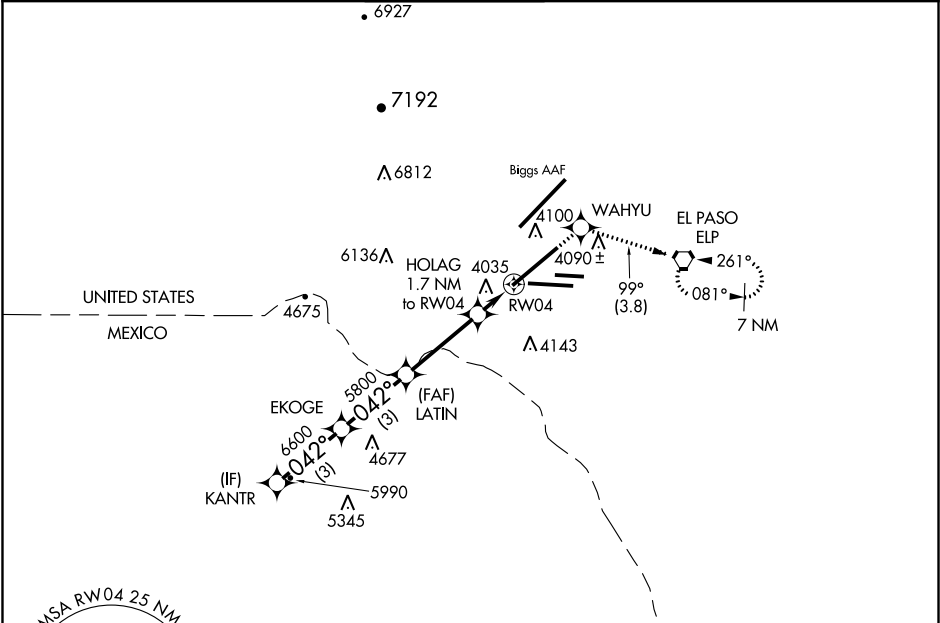
RNP APCH.

ASR

Circling NA for Cat D north of Rwy 26R and northwest of Rwy 4.

MISSED APPROACH: Climb to 6900 direct WAHYU and on track 099° to ELP VORTAC and hold, continue climb-in-hold to 6900.

D-ATIS	EL PASO APP CON	EL PASO TOWER	GND CON	CLNC DEL
120.0 254.3	124.25 298.85	118.3 239.275	121.9 348.6	125.0 379.1



ELEV 3962

TDZE 3923

KANTR

7500

042°

EKOGE

6600

LATIN

5800

3.42°

TCH 55

4580

HOLAG

1.7 NM to RW04

1.1 NM to RW04

RW04

6900

WAHYU

tr 099°

ELP

VGSI and descent angles not coincident (VGSI Angle 3.00/TCH 55).

3 NM

3 NM

3.3 NM

0.6 NM

1.1 NM

CATEGORY	A	B	C	D
LNAV MDA	4320/55	397 (400-1)	4320/60	397 (400-1¼)
CIRCLING	4420-1 458 (500-1)	4460-1 498 (500-1)	4460-1½ 498 (500-1½)	4680-2¼ 718 (800-2¼)

MIRL Rwy 8L-26R

REIL Rws 4 and 8R

HIRL Rws 4-22 and 8R-26L

12020 X 150

0.3% DOWN

0.3% UP

0.3% DOWN

0.3% UP

5499 X 75

9025 X 150

TWR 4105

042° to RW04

26L 26R

SC-3, 03 DEC 2020 to 31 DEC 2020

SC-3, 03 DEC 2020 to 31 DEC 2020