


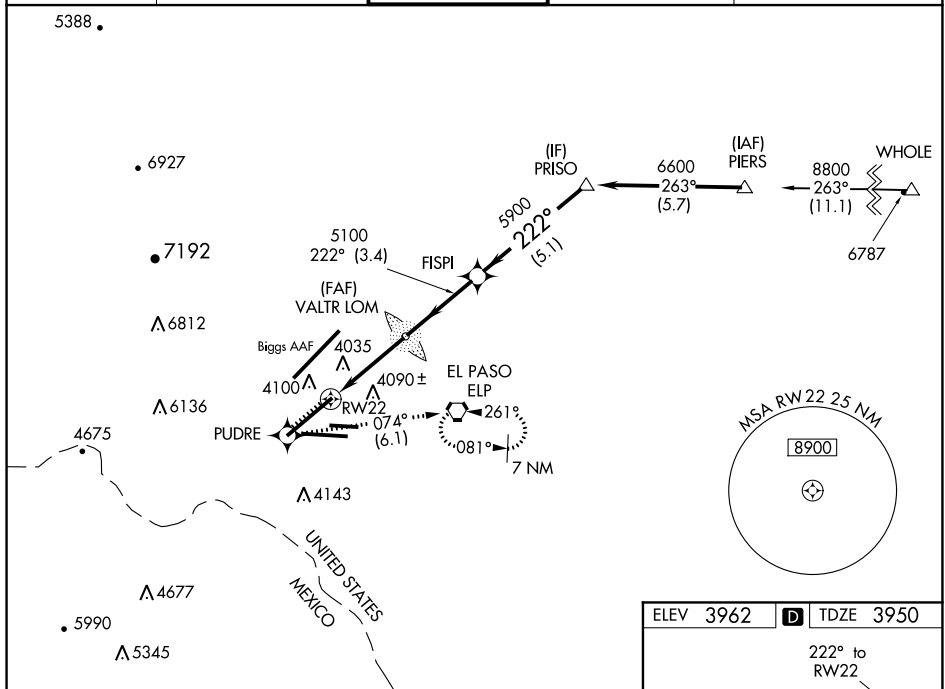


APP CRS 222°	Rwy Idg TDZE Apt Elev	12020 3950 3962
------------------------	-----------------------------	--

RNAV (GPS) Y RWY 22
EL PASO INTL (ELP)

RNP APCH.  Circling NA for Cat D north of Rwy 26R and northwest of Rwy 4. For uncompensated Baro-VNAV systems, LNAV/VNAV NA below -9°C or above 54°C.  For inop ALS increase LNAV/VNAV Cat D visibility to RVR 5000 and LNAV Cat C/D visibility to RVR 5500.		MALS R 	MISSED APPROACH: Climb to 4600 direct PUDRE and climbing left turn to 6900 on track 074° to ELP VORTAC and hold.	
D-ATIS 120.0 254.3	EL PASO APP CON 124.25 298.85	EL PASO TOWER 118.3 239.275	GND CON 121.9 348.6	CLNC DEL 125.0 379.1



4600 ↑ PUDRE 6900 tr 074° ELP

VGSB and RNAV glidepath not coincident (VGSB Angle 3.00/TCH 70).

* LNAV only

VALTR LOM 5100 FISPI 5100 PRISO 6600

* 0.9 NM to RW22

RW22

0.9 2.5 NM 3.4 NM 5.1 NM

22° 5900

GP 3.00° TCH 54

CATEGORY	A	B	C	D
LNAV/DA	4274/26	324 (400-½)		4274/40 324 (400-¾)
LNAV/MDA	4300/24	350 (400-½)	4300/30 350 (400-⅔)	4300/50 350 (400-1)
CIRCLING	4420-1 458 (500-1)	4440-1 478 (500-1)	4460-1½ 498 (500-1½)	4680-2¼ 718 (800-2¼)

