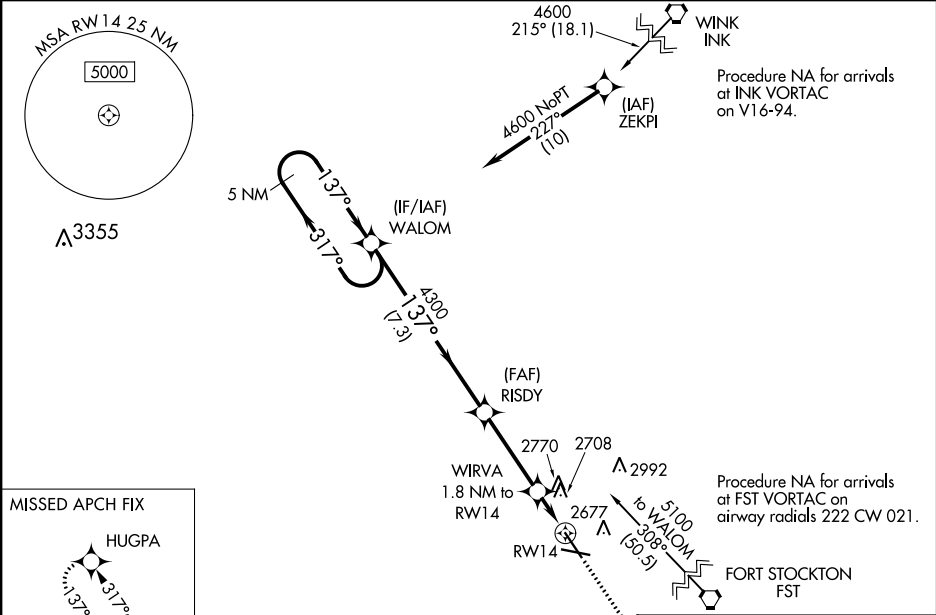


⚠ For uncompensated Baro-VNAV systems, LNAV/VNAV NA below -20°C (-4°F) or above 27°C (80°F).
⚠ DME/DME RNP-0.3 NA. VDP and Baro-VNAV NA with Wink altimeter setting. When local altimeter setting not received, use Wink altimeter setting and increase all DA 95 feet and all MDA 100 feet, increase LPV all Cats visibility ¼ mile, LNAV VNAV all Cats visibility ¾ mile, LNAV Cat C/D and Circling Cat C visibility ¼ mile. Circling to Rwy 9/27 NA at night.

MISSED APPROACH:
Climb to 4500 direct HUGPA and hold.

AWOS-3 118.175	ALBUQUERQUE CENTER 135.875 292.15	UNICOM 122.8 (CTAF) 0
--------------------------	---	---------------------------------



MISSED APCH FIX		ELEV 2613		TDZE 2608	
HUGPA		4500		HUGPA	
5 NM Holding Pattern		WALOM		*LNAV only.	
4600 ← 317°		→ 137°		GP 3.00° TCH 40	
		7.3 NM		3.4 NM	
		0.7 NM		1.1 NM	
CATEGORY	A	B	C	D	
LPV DA	2808-¾		200 (200-¾)		
LNAV/VNAV DA	2900-1		292 (300-1)		
LNAV MDA	3000-1	392 (400-1)	3000-1½	392 (400-1½)	
CIRCLING	3080-1	467 (500-1)	3120-1½ 507 (600-1½)	3180-2 567 (600-2)	

137° to RW14

5226 X 80

5953 X 80

0.3% UP

MRL Rwy 9-27 and 14-32 0