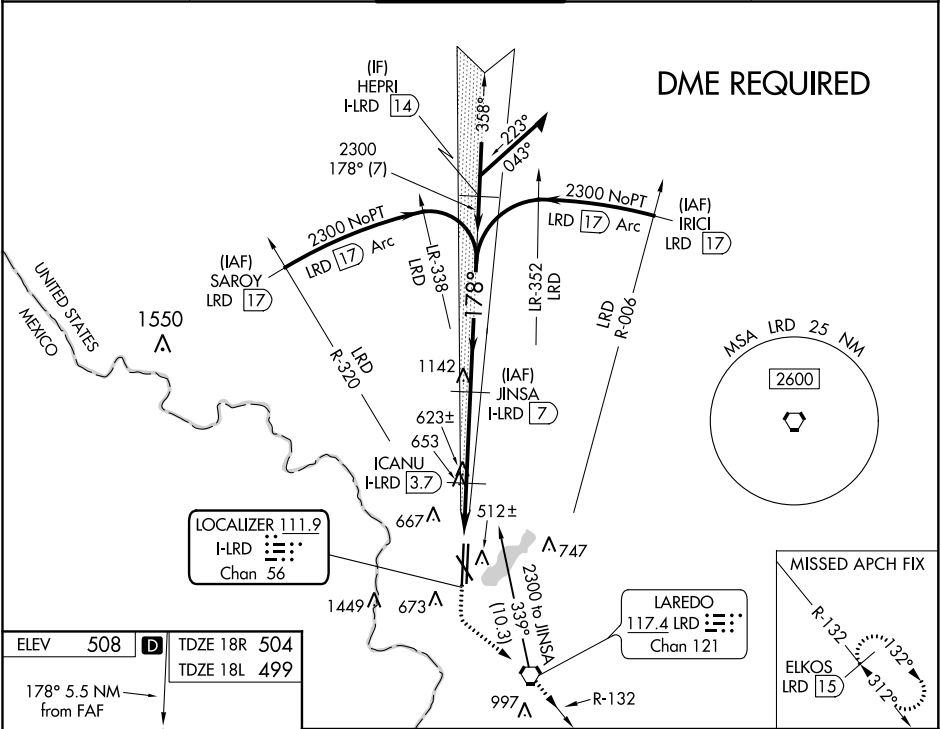


LOC/DME I-LRD	APP CRS	18R	18L
111.9	178°	Rwy Idg 8743	8236
Chan 56		TDZE 504	499
		Apt Elev 508	508

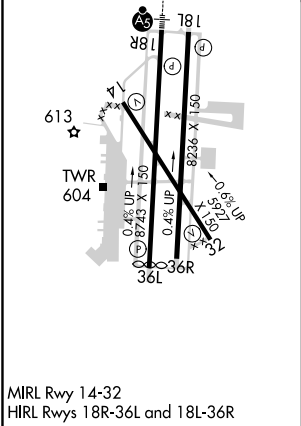
ILS or LOC RWY 18R
LAREDO INTL (L.RD)

<p>⚠ Circling NA west of Rwy 14 and 36L. DME required. For inop ALS, increase S-ILS 18R Cat E visibility to ¾ SM and increase S-LOC 18R Cat C/D/E visibility to 1½ SM.</p>		<p>MALSR</p> <p>AS</p>	<p>MISSED APPROACH: Climb to 1100 then climbing left turn to 2500 direct LRD VORTAC and on LRD VORTAC R-132 to ELKOS/LRD 15 DME and hold.</p>	
ATIS 125.775	HOUSTON CENTER 127.8 307.2	LAREDO TOWER ★ 120.1(CTAF) 0 257.9	GND CON 121.8	UNICOM 122.95



ELEV 508	TDZE 18R 504
	TDZE 18L 499

178° 5.5 NM from FAF



1100

2500

LRD

ELKOS

LRD 15

R-132

VGSI and ILS glidepath not coincident

(VGSI Angle 3.00/TCH 50).

Use I-LRD DME when on the localizer course.

1100

2500

LRD

ELKOS

LRD 15

R-132

1100

2500

LRD

ELKOS

LRD 15

R-132

1100

2500

LRD

ELKOS

LRD 15

R-132

1100

2500

LRD

ELKOS

LRD 15

R-132

1100

2500

LRD

ELKOS

LRD 15

R-132

1100

2500

LRD

ELKOS

LRD 15

R-132

1100

2500

LRD

ELKOS

LRD 15

R-132

1100

2500

LRD

ELKOS

LRD 15

R-132

1100

2500

LRD

ELKOS

LRD 15

R-132

1100

2500

LRD

ELKOS

LRD 15

R-132

1100

2500

LRD

ELKOS

LRD 15

R-132

1100

2500

LRD

ELKOS

LRD 15

R-132

1100

2500

LRD

ELKOS

LRD 15

R-132

1100

2500

LRD

ELKOS

LRD 15

R-132

1100

2500

LRD

ELKOS

LRD 15

R-132

1100

2500

LRD

ELKOS

LRD 15

R-132

1100

2500

LRD

ELKOS

LRD 15

R-132

1100

2500

LRD

ELKOS

LRD 15

R-132

1100

2500

LRD

ELKOS

LRD 15

R-132

1100

2500

LRD

ELKOS

LRD 15

R-132

1100

2500

LRD

ELKOS

LRD 15

R-132

1100

2500

LRD

ELKOS

LRD 15

R-132

1100

2500

LRD

ELKOS

LRD 15

R-132

1100

2500

LRD

ELKOS

LRD 15

R-132

1100

2500

LRD

ELKOS

LRD 15

R-132

1100

2500

LRD

ELKOS

LRD 15

R-132

1100

2500

LRD

ELKOS

LRD 15

R-132

1100

2500

LRD

ELKOS

LRD 15

R-132

1100

2500

LRD

ELKOS

LRD 15

R-132

1100

2500

LRD

ELKOS

LRD 15

R-132

1100

2500

LRD

ELKOS

LRD 15

R-132

1100

2500

LRD

ELKOS

LRD 15

R-132

1100

2500

LRD

ELKOS

LRD 15

R-132

1100

2500

LRD

ELKOS

LRD 15

R-132

1100

2500

LRD

ELKOS

LRD 15

R-132

1100

2500

LRD

ELKOS

LRD 15

R-132

1100

2500

LRD

ELKOS

LRD 15

R-132

1100

2500

LRD

ELKOS

LRD 15

R-132

1100

2500

LRD

ELKOS

LRD 15

R-132

1100

2500

LRD

ELKOS

LRD 15

R-132

1100

2500

LRD

ELKOS

LRD 15

R-132

1100

2500

LRD

ELKOS

LRD 15

R-132

1100

2500

LRD

ELKOS

LRD 15

R-132

1100

2500

LRD

ELKOS

LRD 15

R-132

1100

2500

LRD

ELKOS

LRD 15

R-132

1100

2500

LRD

ELKOS

LRD 15

R-132

1100

2500

LRD

ELKOS

LRD 15

R-132

1100

2500

LRD

ELKOS

LRD 15

R-132

1100

2500

LRD

ELKOS

LRD 15

R-132

1100

2500

LRD

ELKOS

LRD 15

R-132

1100

2500

LRD

ELKOS

LRD 15

R-132

1100

2500

LRD

ELKOS

LRD 15

R-132

1100

2500

LRD

ELKOS

LRD 15

R-132

1100

2500

LRD

ELKOS

LRD 15

R-132

1100

2500

LRD

ELKOS

LRD 15

R-132

1100

2500

LRD

ELKOS

LRD 15

R-132

1100

2500

LRD

ELKOS

LRD 15

R-132

1100

2500

LRD

ELKOS

LRD 15

R-132

1100

2500

LRD

ELKOS

LRD 15

R-132

1100

2500

LRD

ELKOS

LRD 15

R-132

1100

2500

LRD

ELKOS

LRD 15

R-132

1100

2500

LRD

ELKOS

LRD 15

R-132

1100

2500

LRD

ELKOS

LRD 15

R-132

1100

2500

LRD

ELKOS

LRD 15

R-132

1100

2500

LRD

ELKOS

LRD 15

R-132

1100

2500

LRD

ELKOS

LRD 15

R-132

1100

2500

LRD

ELKOS

LRD 15

R-132

1100

2500

LRD

ELKOS

LRD 15

R-132

1100

2500

LRD

ELKOS

LRD 15

R-132

1100

2500

LRD

ELKOS

LRD 15

R-132

1100

2500

LRD

ELKOS

LRD 15

R-132

1100

2500

LRD

ELKOS

LRD 15

R-132

1100

2500

LRD

ELKOS

LRD 15

R-132

1100

2500

LRD

ELKOS

LRD 15

R-132

1100

2500

LRD

ELKOS

LRD 15

R-132

1100

2500

LRD

ELKOS

LRD 15

R-132

1100

2500

LRD

ELKOS

LRD 15

R-132

1100

2500

LRD

ELKOS

LRD 15

R-132

1100

2500

LRD

ELKOS

LRD 15

R-132

1100

2500

LRD

ELKOS

LRD 15

R-132

1100

2500

LRD

ELKOS

LRD 15

R-132

1100

2500

LRD

ELKOS

LRD 15

R-132

1100

2500

LRD

ELKOS

LRD 15

R-132

1