

LAREDO, TEXAS

AL-226 (FAA)

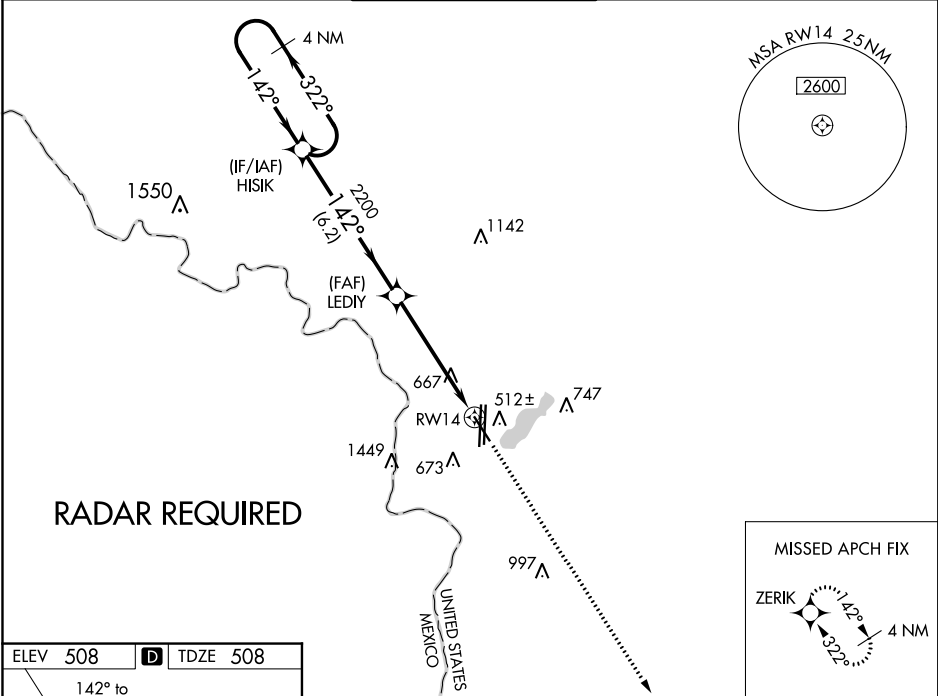
20142

WAAS CH 65841 W14A	APP CRS 142°	Rwy Idg TDZE 508 Apt Elev 508
--	------------------------	---

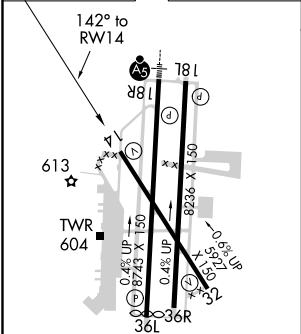
RNAV (GPS) RWY 14
LAREDO INTL (L.R.D)

 For uncompensated Baro-VNAV systems, LNAV/VNAV NA below 1°C (34°F) or above 54°C (130°F). Circling NA west of Rwy 14 and 36L. DME/DME RNP-0.3 NA.	MISSED APPROACH: Climb to 2500 direct ZERIK and hold.
--	---

ATIS 125.775	HOUSTON CENTER 127.8 307.2	LAREDO TOWER ★ 120.1(CTAF) 257.9	GND CON 121.8	UNICOM 122.95
------------------------	--------------------------------------	--	-------------------------	-------------------------



ELEV 508	D	TDZE 508
-----------------	----------	-----------------



MIRL Rwy 14-32 HIRL Rwy 18R-36L and 18L-36R
--

4 NM

Holding Pattern

3000

322°

142°

GP 3.00°

TCH 55°

HISIK

LEDIY

2200

2200

6.2 NM

3.9 NM

1.3

*1.3 NM to RW14

RW14

*LNAV only.

2500

↑

ZERIK

✦

CATEGORY	A	B	C	D	E
LPV DA	758-¾ 250 (300-¾)				
LNAV/VNAV DA	810-⅞ 302 (400-⅞)				
LNAV MDA	960-1	452 (500-1)	960-1⅜	452 (500-1⅜)	
CIRCLING	960-1 452 (500-1)	980-1 472 (500-1)	1100-1½ 592 (600-1½)	1200-2¼ 692 (700-2¼)	1200-2½ 692 (700-2½)

LAREDO, TEXAS
Amdt 1 01FEB18

27°33'N-99°28'W

LAREDO INTL (L.R.D)
RNAV (GPS) RWY 14

SC-3, 03 DEC 2020 to 31 DEC 2020

SC-3, 03 DEC 2020 to 31 DEC 2020