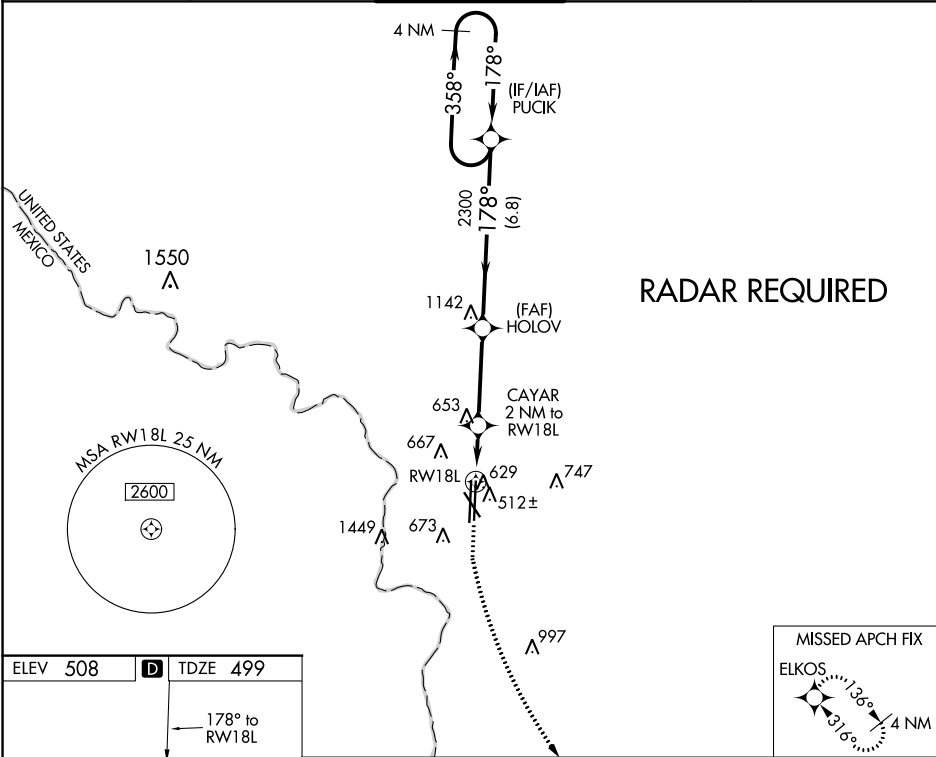


WAAS Ch 77899 W18B	APP CRS 178°	Rwy Idg TDZE 499 Apt Elev 508
--	------------------------	---

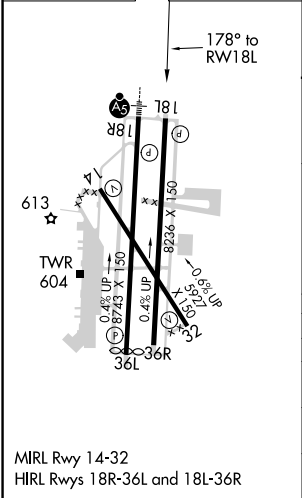
RNAV (GPS) RWY 18L
LAREDO INTL (L.R.D)

T For uncompensated Baro-VNAV systems, LNAV/VNAV NA below 1°C (34°F) or above 54°C (130°F). Circling NA west of Rwy 14 and 36L. DME/DME RNP-0.3 NA.	MISSED APPROACH: Climb to 2500 then climbing left turn to 2500 direct ELKOS and hold.
--	---

ATIS 125.775	HOUSTON CENTER 127.8 307.2	LAREDO TOWER ★ 120.1(CTAF) 257.9	GND CON 121.8	UNICOM 122.95
------------------------	--------------------------------------	--	-------------------------	-------------------------



ELEV 508	D	TDZE 499
-----------------	----------	-----------------



1000 ↑	2500 ↙	ELKOS ✦					
*LNAV only	CAYAR 2 NM to RW18L	HOLOV 2300	178°		PUCIK 358° → 3000 ← 178°	4 NM Holding Pattern	
	1 NM to RW18L		2300	1180	GP 3.00° TCH 51		
	1 NM	1 NM	3.5 NM	6.8 NM			
CATEGORY	A	B	C	D	E		
LPV DA	699-¾ 200 (200-¾)						
LNAV/ VNAV DA	810-⅞ 311 (400-⅞)						
LNAV MDA	880-1 381 (400-1)		880-1⅛ 381 (400-1⅛)				
C CIRCLING	940-1 432 (500-1)	980-1 472 (500-1)	1100-1½ 592 (600-1½)	1200-2¼ 692 (700-2¼)	1200-2½ 692 (700-2½)		