

WAAS Ch <b>82599</b> <b>W18A</b>	APP CRS <b>178°</b>	Rwy Idg <b>8743</b> TDZE <b>504</b> Apt Elev <b>508</b>
--	------------------------	---

RNAV (GPS) RWY 18R  
LAREDO INTL (LRD)

**T** For uncompensated Baro-VNAV systems, LNAV/VNAV NA below 1°C (34°F) or above 54°C (130°F). Circling NA West of Rwy 14 and 36L. DME/DME RNP-0.3 NA.

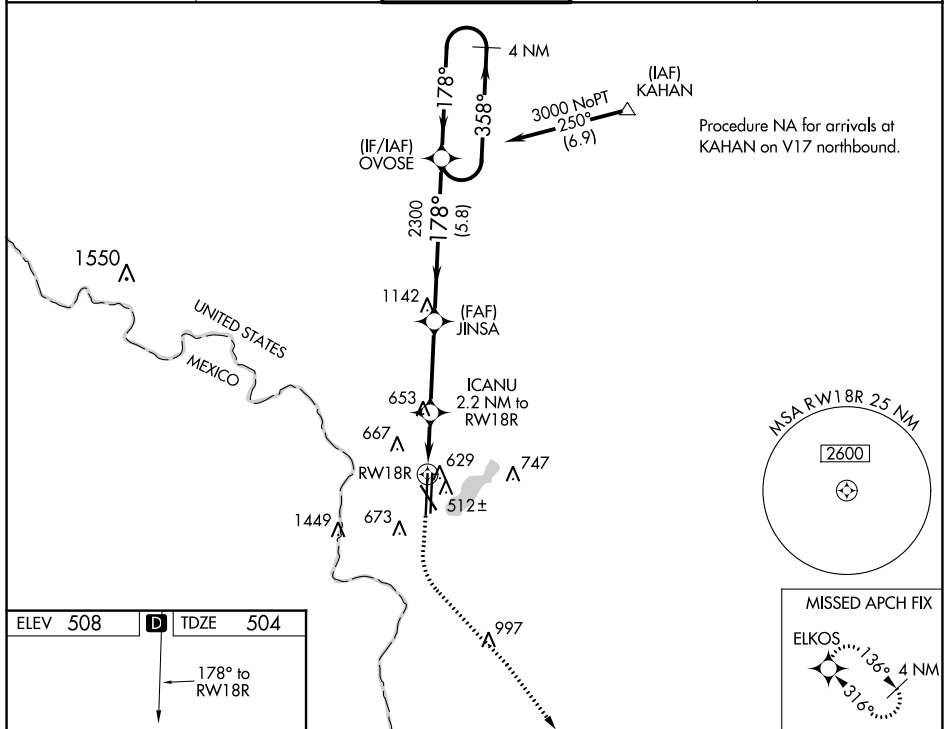
**A** For inop ALS, increase LPV Cat E visibility to  $\frac{3}{4}$  SM, LNAV/VNAV all Cats visibility to  $\frac{1}{2}$  SM, and LNAV Cats C/D/E to 1 SM.

MALSR

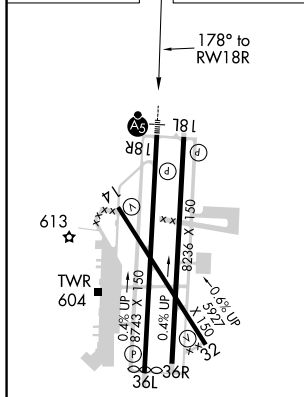


**MISSED APPROACH:**  
Climb to 1000 then climbing  
left turn to 2500 direct ELKOS  
and hold.

ATIS 125.775	HOUSTON CENTER 127.8 307.2	LAREDO TOWER* 120.1(CTAF) 0 257.9	GND CON 121.8	UNICOM 122.95
-----------------	-------------------------------	--------------------------------------	------------------	------------------



ELEV 508	<b>D</b>	TDZE 504
----------	----------	----------



MIRL Rwy 14-32  
HIRL Rwy 18R-36L and 18L-36R

1000 ↑	2500 ↘	ELKOS ✦	VGS1 and RNAV glidepath not coincident (VGS1 Angle 3.00°/TCH 50).				4 NM Holding Pattern
* LNAV only			ICANU 2.2 NM to RW18R	JINSA 2300	OVOSE	358° →	3000
RW18R			* 1 NM to RW18R	* 1260	2300	← 178°	GP 3.00° TCH 57
1 NM			1.2	3.3 NM	5.8 NM		
CATEGORY		A		B	C	D	E
LPV	DA	704-½ 200 (200-½)					
LNAV/ VNAV	DA	810-½ 306 (400-½)					
LNAV MDA		880-½ 376 (400-½)		880-⅝ 376 (400-⅝)			
CIRCLING	940-1 432 (500-1)	980-1 472 (500-1)		1100-1½ 592 (600-1½)		1200-2¼ 692 (700-2¼)	1200-2½ 692 (700-2½)