
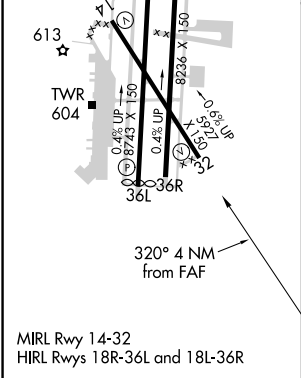
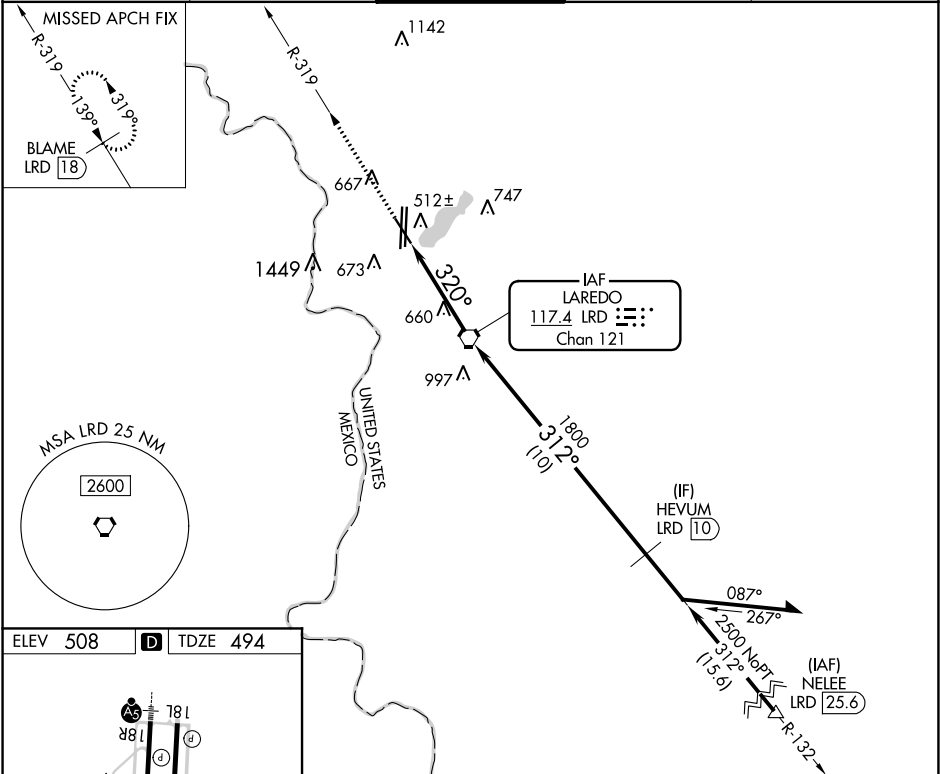


VORTAC LRD <b>117.4</b> Chan <b>121</b>	APP CRS <b>320°</b>	Rwy Idg TDZE Apt Elev	<b>5927</b> <b>494</b> <b>508</b>
---	------------------------	-----------------------------	---

VOR or TACAN RWY 32  
LAREDO INTL (LRD)

 Circling NA west of Rwy 14 and 36L. Rwy 32 helicopter visibility reduction below 3/4 SM NA. DME required.		MISSED APPROACH: Climb to 2600 on LRD VORTAC R-319 to BLAME/LRD 18 DME and hold.		
ATIS <b>125.775</b>	HOUSTON CENTER <b>127.8 307.2</b>	LAREDO TOWER ★ <b>120.1 (CTAF) 0 257.9</b>	GND CON <b>121.8</b>	UNICOM <b>122.95</b>



2600 BLAME LRD 18		LRD VORTAC		Remain within 15 NM	
R-319		3.01° TCH 55		132°	
LRD 2.8		312°		2500	
LRD 4		320°		1800	
1.2		2.8 NM		VGSI and descent angles not coincident (VGSI Angle 3.00/TCH 71).	
CATEGORY	A	B	C	D	E
S-32	920-1	426 (500-1)	920-1¼	426 (500-1¼)	
CIRCLING	940-1 432 (500-1)	980-1 472 (500-1)	1100-1½ 592 (600-1½)	1200-2¼ 692 (700-2¼)	1200-2½ 692 (700-2½)

SC-3, 03 DEC 2020 to 31 DEC 2020

SC-3, 03 DEC 2020 to 31 DEC 2020