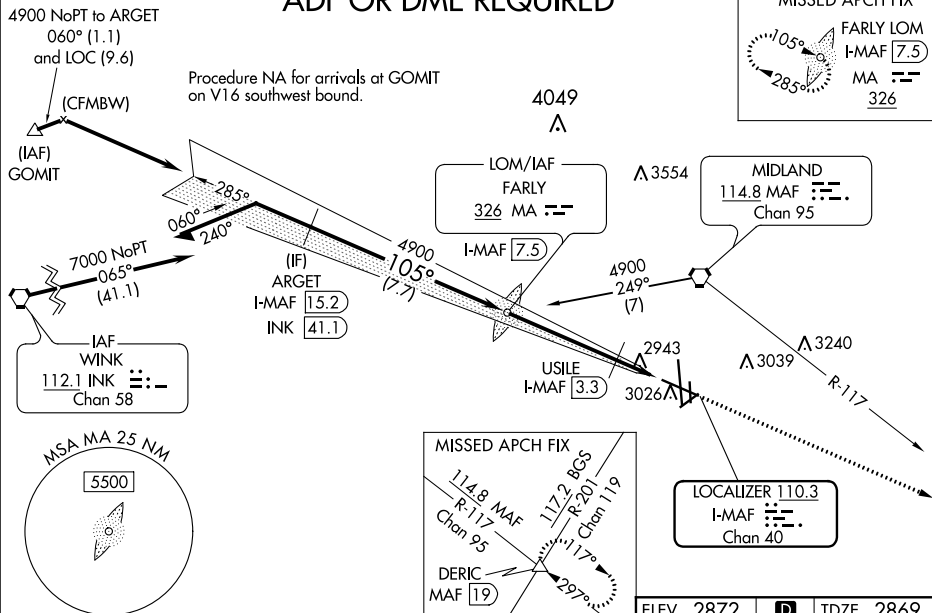


ILS or LOC RWY 10
MIDLAND INTL AIR AND SPACE PORT (MAF)

MISSED APPROACH: Climb to 4900 on heading 105° and on MAF VORTAC R-117 to DERIC INT/MAF 19 DME and hold.

ADF OR DME REQUIRED


 FARLY LOM
 I-MAF 7.5
 MA
 326



SC-3, 03 DEC 2020 to 31 DEC 2020

The diagram illustrates the geometry of a Standard Instrument Departure (SID) procedure. It shows a departure from a runway heading of 105 degrees. A climb path is shown at 285 degrees. Key altitude points are 4900 feet, 4884 feet, and 3460 feet. Distances include 4.3 NM and 1.8 NM. Labels include EARLY LOM I-MAF 7.5, USILE I-MAF 3.3, and I-MAF 1.5. A note indicates "LOC only".

CATEGORY	A	B	C	D	E
S-ILS 10 **	3069/24 200 (200-½)				
S-LOC 10	3460/24	591 (600-½)	3460-1¼ 591 (600-1¼)		
CIRCLING	3460-1	588 (600-1)	3460-1¾ 588 (600-1¾)	3520-2 648 (700-2)	3600-2½ 728 (800-2½)

USILE FIX MINIMUMS

S-LOC 10	3420/24	551 (600-½)	3420/60 551 (600-1¼)		
CIRCLING	3440-1	568 (600-1)	3440-1⅝ 568 (600-1⅝)	3520-2 648 (700-2)	3600-2½ 728 (800-2½)

