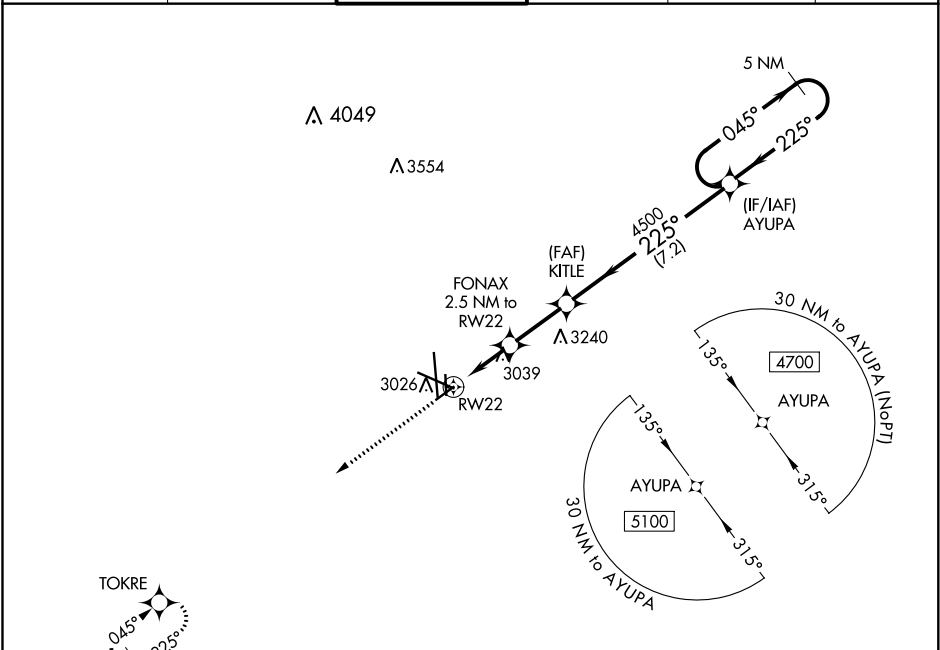


WAAS CH 50429 W22A	APP CRS 225°	Rwy Idg TDZE 2855 Apt Elev 2872
--	------------------------	---

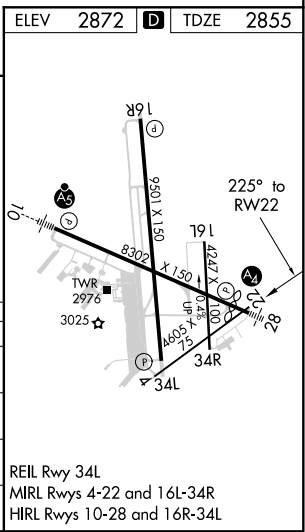
RNAV (GPS) RWY 22
MIDLAND INTL AIR AND SPACE PORT (M.A.F.)

ASR	For uncompensated Baro-VNAV systems, LNAV/VNAV NA below -11°C (13°F) or above 25°C (77°F). Circling Rwy 16L NA at night. Rwy 22 helicopter visibility reduction below ¾ SM NA. DME/DME RNP-0.3 NA.	MISSED APPROACH: Climb to 5000 direct TOKRE and hold.
-----	--	---

ATIS 126.8 235.975	MIDLAND APP CON* 124.6 290.4	MIDLAND TOWER* 118.7 (CTAF) 0273.45	GND CON 121.9 348.6	CLNC DEL 118.05 317.65	UNICOM 122.95
------------------------------	--	---	-------------------------------	----------------------------------	-------------------------



5000		TOKRE	
* LNAV only			
* 1.3 NM to RW22		* 3700	
FONAX 2.5 NM to RW22		KITLE 4500	
RW22		AYUPA 5 NM Holding Pattern	
1.3		1.2	
2.5 NM		7.2 NM	
CATEGORY	A	B	C
LPV DA	3055-¾ 200 (200-¾)		
LNAV/VNAV DA	3134-7/8 279 (300-7/8)		
LNAV MDA	3320-1 465 (500-1)	3320-1¾ 465 (500-1¾)	
CIRCLING	3440-1 568 (600-1)	3440-1½ 568 (600-1½)	3520-2 648 (700-2)



SC-3, 03 DEC 2020 to 31 DEC 2020

SC-3, 03 DEC 2020 to 31 DEC 2020