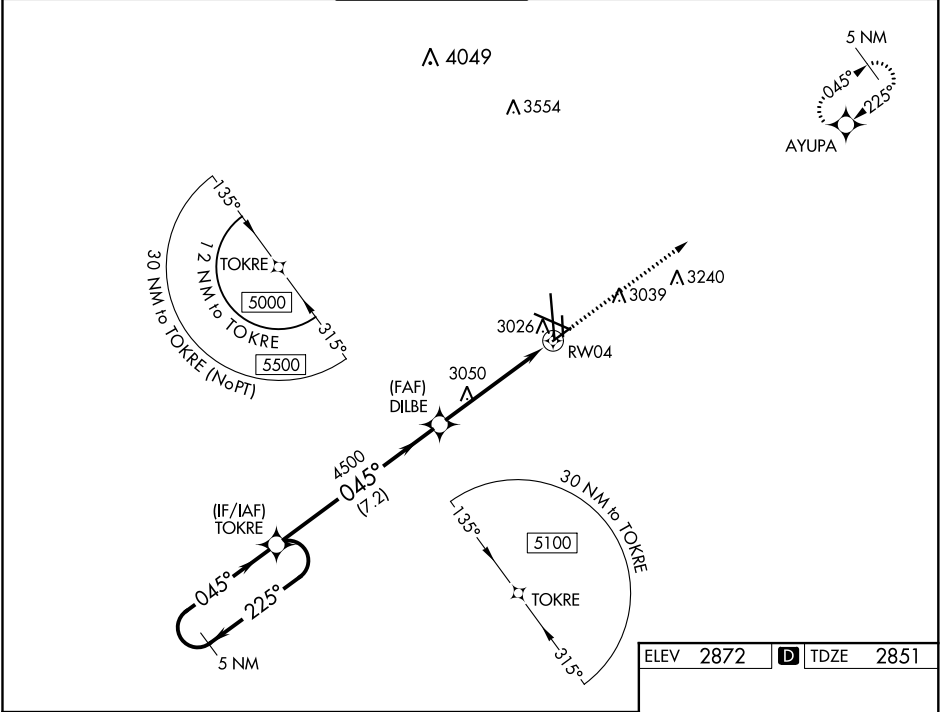


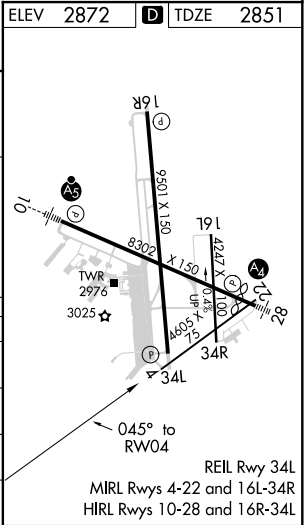
WAAS CH 90529 W04A	APP CRS 045°	Rwy Idg TDZE Apt Elev	4605 2851 2872
--	------------------------	-----------------------------	---

RNAV (GPS) RWY 4
MIDLAND INTL AIR AND SPACE PORT (MAF')

ASR For uncompensated Baro-VNAV systems, LNAV/VNAV NA below -11°C (13°F) or above 25°C (77°F). Circling Rwy 16L NA at night. Rwy 4 helicopter visibility reduction below ¾ SM NA. DME/DME RNP-0.3 NA.	MISSED APPROACH: Climb to 4700 direct AYUPA and hold.				
ATIS 126.8 235.975	MIDLAND APP CON★ 124.6 290.4	MIDLAND TOWER★ 118.7 (CTAF) 0273.45	GND CON 121.9 348.6	CLNC DEL 118.05 317.65	UNICOM 122.95



<div>5 NM Holding Pattern</div> <div>5000 ← 225° 045° →</div> <div>GP 3.00° TCH 45</div>				<div>TOKRE</div> <div>DILBE</div> <div>4500</div> <div>* 1.5 NM to RW04</div> <div>* LNAV only</div>		<div>4700</div> <div>AYUPA</div>	
<div>7.2 NM</div> <div>3.5 NM</div> <div>1.5 NM</div>				<div>RW04</div>			
CATEGORY	A	B	C	D			
LPV DA	3051-¾			200 (200-¾)			
LNAV/VNAV DA	3283-1½			432 (500-1½)			
LNAV MDA	3360-1	509 (500-1)	3360-1¾	509 (500-1¾)			
CIRCLING	3440-1	568 (600-1)	3440-1½ 568 (600-1½)	3520-2 648 (700-2)			



SC-3, 03 DEC 2020 to 31 DEC 2020

SC-3, 03 DEC 2020 to 31 DEC 2020