
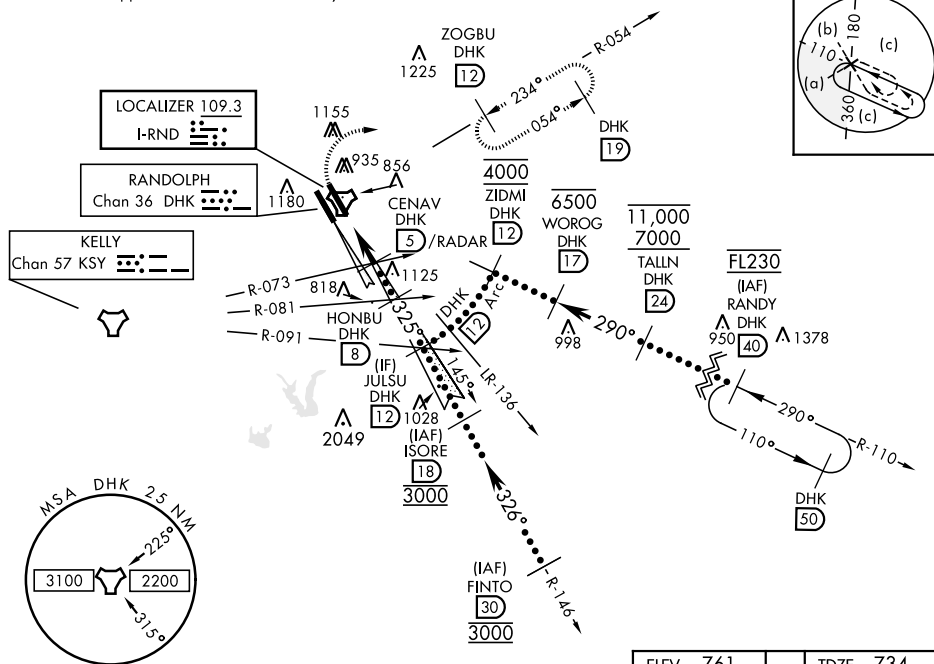


HI-ILS or LOC RWY 33R

LOC I-RND <u>109.3</u>	APCH CRS 325°	Rwy ldg TDZE Arpt Elev 8351 734 761	JAL-341 [USAF]	RANDOLPH AFB (KRND)			
*When ALS inop, increase CAT CDE RVR to 40 and vis to ¾ mile. **When ALS inop, increase CAT CDE RVR to 60 and vis to 1½ miles. ***Circling not authorized SW of Rwy 15L-33R.			ALSF-1 	MISSED APPROACH: Climbing right turn to 3000, intercept DHK TACAN R-054 to ZOGBU and hold.			
ATIS ★ 290.525	SAN ANTONIO APP CON 128.05 318.1	RANDOLPH TOWER ★ 128.25 294.7	RANDOLPH GND CON 119.65 275.8	CLNC DEL (RWY 15L-33R) 338.35	HANGOVER ATIS ★ 327.8	HANGOVER TOWER ★ 120.5 291.1	HANGOVER GND CON 124.75 353.75

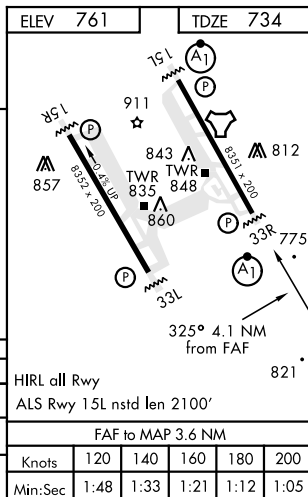
Simultaneous approaches authorized with Rwy 33L and 33R.



RADAR or DME REQUIRED

EMERG SAFE ALT 100 NM 4200

3000 DHK R-054	ZOGBU DHK 12	VGSI and ILS TCH not coincident. VGSI TCH 42.	CENAV /RADAR 5	HONBU 8	JULSU R-146 12
TACAN	FOLAV 1.4	2100	2100	2100	3000
5 NM	3.6 NM				
CATEGORY	C	D	E		
S-ILS 33R *	934/24	200	(200- $\frac{1}{2}$)		
S-LOC 33R **	1140/40	406	(400- $\frac{3}{4}$)		
CIRCLING ***	1260-1 $\frac{1}{2}$ 499 (500-1 $\frac{1}{2}$)	1800-3	1039 (1100-3)		



HI-ILS or LOC RWY 33R