

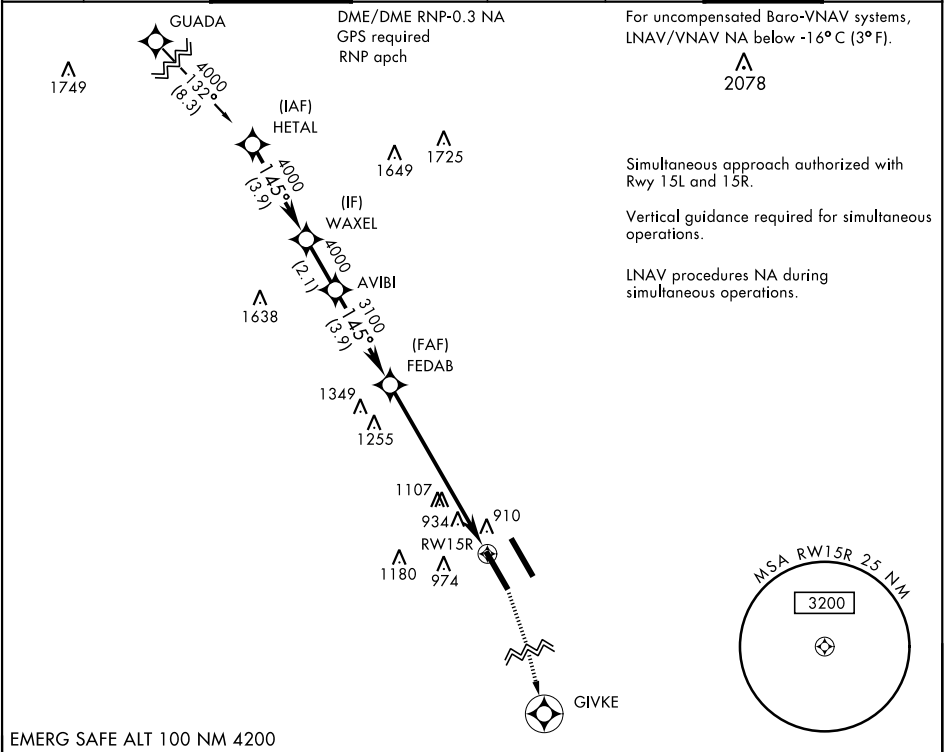
RNAV (GPS) RWY 15R

APCH CRS	Rwy Idg	8352
145°	TDZE	761
	Arpt Elev	761

AL-341 [USAF]

RANDOLPH AFB (KRND)

* Circling not authorized NE of Rwy 15R-33L.				MISSED APPROACH: Climb to 1500 then climbing right turn to 3000 direct GIVKE. Expect ATC instructions.			
ATIS ★	SAN ANTONIO APP CON	RANDOLPH TOWER ★	RANDOLPH GND CON	CLNC DEL (RWY 15L-33R)	HANGOVER ATIS ★	HANGOVER TOWER ★	HANGOVER GND CON
290.525	128.05 318.1	128.25 294.7	119.65 275.8	338.35	327.8	120.5 291.1	124.75 353.75



EMERG SAFE ALT 100 NM 4200

†LNAV Only					<div><div>1500</div><div>↑</div></div>	<div><div>3000</div><div>↷</div></div>	<div><div>GIVKE</div><div></div></div>	ELEV 761	TDZE 761	
HETAL		WAXEL		AVIBI						
4000		4000		4000		145° to RW15R				
GS 3.06° TCH 48		3100		FEDAB		↑2.1 NM to RW15R				
3.9 NM		2.1 NM		3.9 NM		7.1 NM				
CATEGORY	A		B		C		D		E	
LNAV/VNAV DA	1220-1½				459		(500-1½)			
LNAV MDA	1480/55 719 (800-1)				1480-2		719 (800-2)			
CIRCLING*	1480-1 719 (800-1)				1500-2 739 (800-2)		1800-3 1039 (1100-3)			

HIRL all Rwy  
ALS Rwy 15L nstd len 2100'

RNAV (GPS) RWY 15R

SC-3, 03 DEC 2020 to 31 DEC 2020

SC-3, 03 DEC 2020 to 31 DEC 2020