


UNIVERSAL CITY, TEXAS

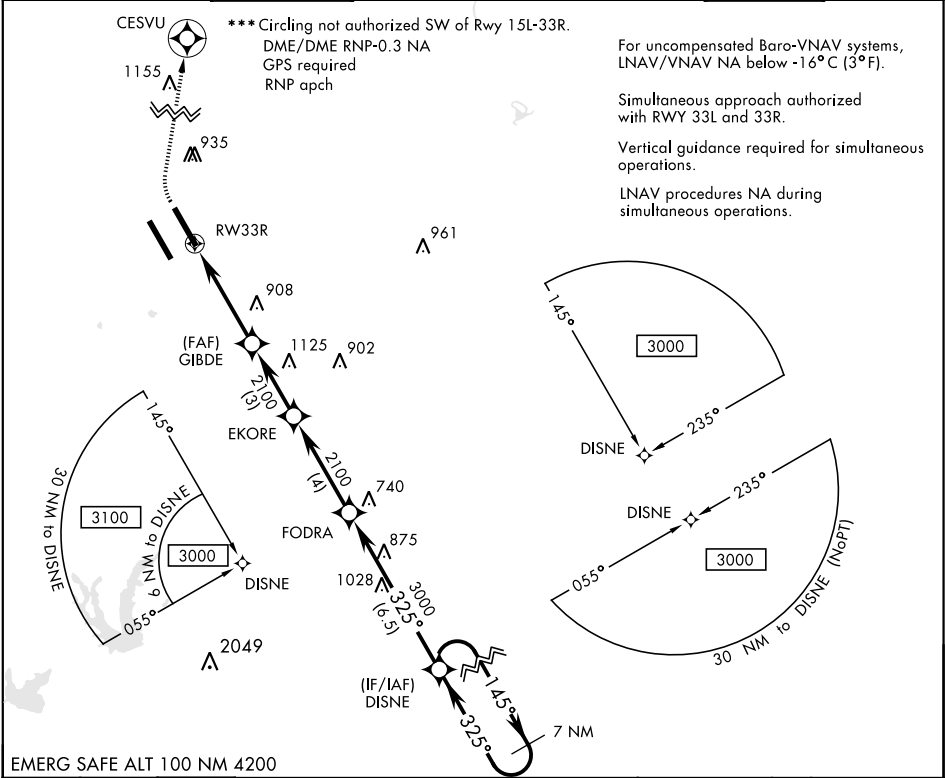
RNAV (GPS) RWY 33R

APCH CRS	Rwy Idg	8351
325°	TDZE	734
	Arpt Elev	761



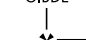
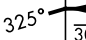
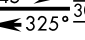
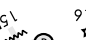
AL-341 [USAF]

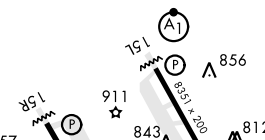
RANDOLPH AFB (KRND)

* When ALS inop, increase all CAT vis to 1 1/4 miles. ** When ALS inop, increase CAT AB RVR to 55 and vis to 1 mile, CAT CDE vis to 1 3/8 miles.				ALSF-1 	MISSED APPROACH: Climb to 1200 then climbing right turn to 3000 direct CESVU. Expect ATC instructions.		
ATIS ★	SAN ANTONIO APP CON	RANDOLPH TOWER ★	RANDOLPH GND CON	CLNC DEL (RWY 15L-33R)	HANGOVER ATIS ★	HANGOVER TOWER ★	HANGOVER GND CON
290.525	128.05 318.1	128.25 294.7	119.65 275.8	338.35	327.8	120.5 291.1	124.75 353.75



EMERG SAFE ALT 100 NM 4200

1200 ↑		3000 ↷		CESVU 		ELEV 761		TDZE 734	
↑ LNAV Only									
↑ 1 NM to RW33R		GIBDE		EKORE		FODRA		DISNE	
									
4.1 NM		3 NM		4 NM		6.5 NM			
CATEGORY		A		B		C		D E	
LNAV/VNAV DA *		1080/40		346		(400-34)			
LNAV MDA **		1080/24		346 (400-½)		1080/30		346 (400-⅝)	
CIRCLING ***		1180-1 419 (500-1)		1220-1 459 (500-1)		1260-1½ 499 (500-1½)		1800-3 1039 (1100-3)	



HIRL all Rwy
ALS Rwy 15L nstd len 2100'

UNIVERSAL CITY, TEXAS

29°32'N-98°17'W

RANDOLPH AFB (KRND)

Orig 11OCT18

RNAV (GPS) RWY 33R

SC-3, 03 DEC 2020 to 31 DEC 2020

SC-3, 03 DEC 2020 to 31 DEC 2020