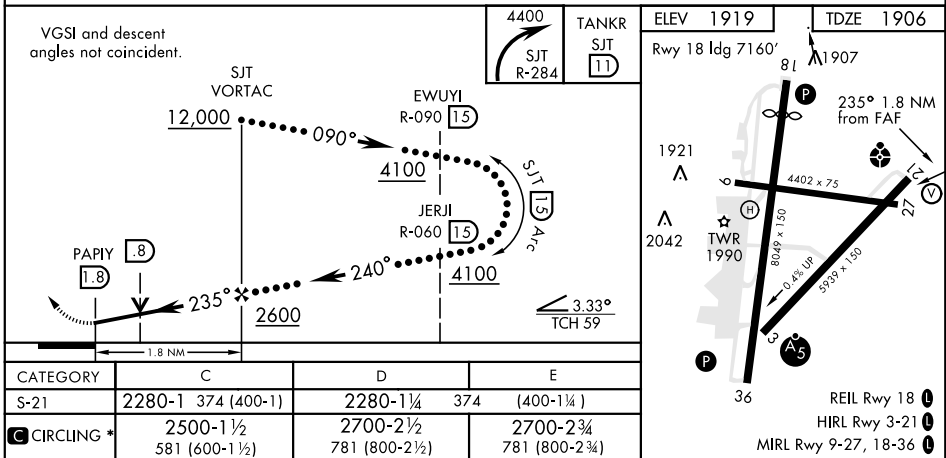
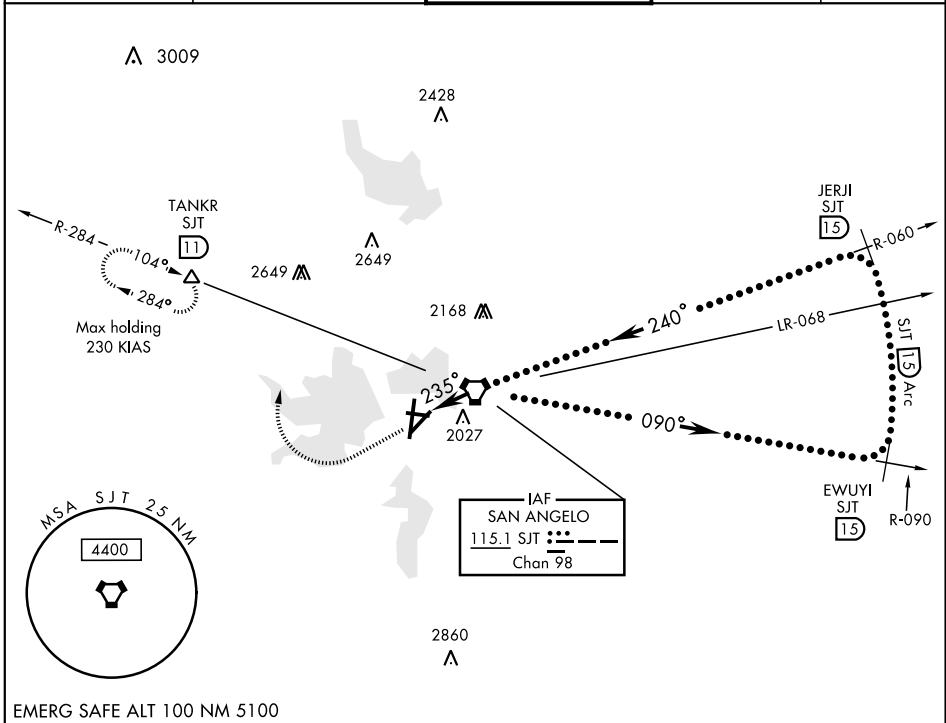


HI-VOR/DME or TACAN RWY 21

VORTAC SJT 115.1 Chan 98	APCH CRS 235°	Rwy ldg 5939 TDZE 1906 Arpt Elev 1919	JAL-367 [USAF]	SAN ANGELO REGIONAL/MATHIS FIELD (KSJT)	
* Circling NA for CAT E W of Rwy 18-36.			ODALS	MISSED APPROACH: Climbing right turn to 4400 on SJT VORTAC R-284 to TANKR INT/SJT 11 DME and hold.	
ATIS 128.45 319.0	SAN ANGELO APP CON 125.35 354.1		MATHIS TOWER ★ 118.3 0 (CTAF) 284.7	GND CON 121.9 348.6	ASR



HI-VOR/DME or TACAN RWY 21