

WAAS CH 81817 W21A	APP CRS 218°	Rwy Idg TDZE 1906 Apt Elev 1919
----------------------------------------	------------------------	-----------------------------------------------------

RNAV (GPS) RWY 21
SAN ANGELO RGNL/MATHIS FIELD (SJT)

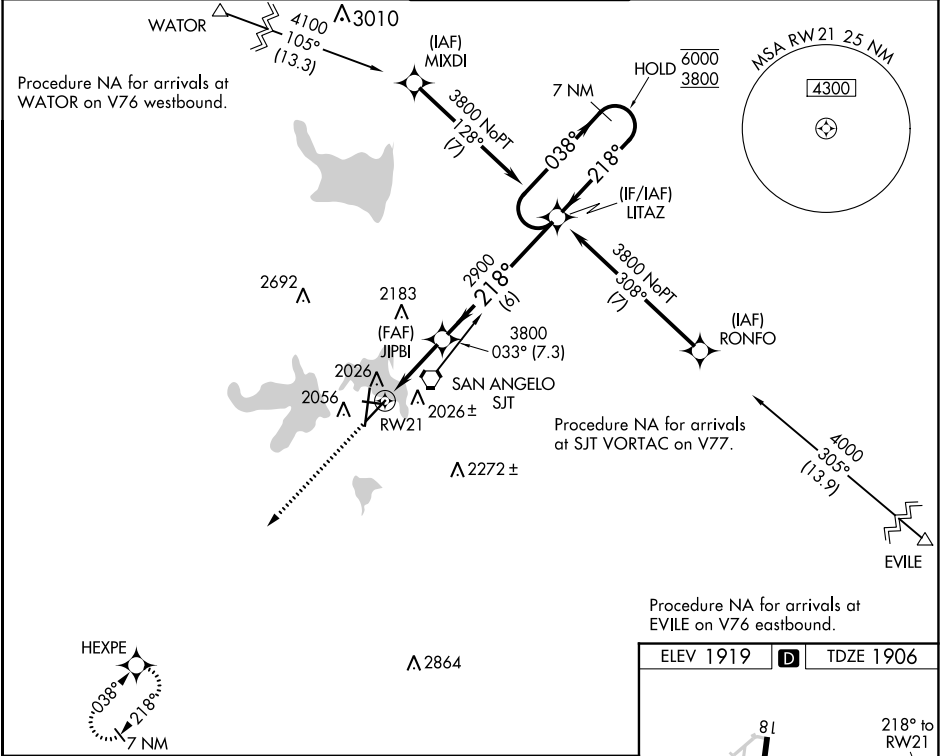
RNP APCH.



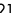

▼ For uncompensated Baro-VNAV systems, LNAV/VNAV NA below -8°C or above 54°C.
▲ Circling NA for Cat E west of Rwy 18-36. Inop table does not apply to LPV. For inop ALS, increase LNAV/VNAV Cat A/B/E visibility to 1 SM; increase LNAV Cat E visibility to 1¼ SM.

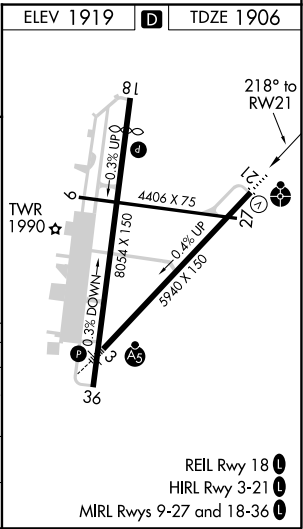
ODALS

MISSED APPROACH:
Climb to 4400 direct
HEXPE and hold.

ATIS 128.45 319.0	SAN ANGELO APP CON ★ 125.35 354.1	MATHIS TOWER ★ 118.3 (CTAF) 0 284.7	GND CON 121.9 348.6	UNICOM 122.95
-----------------------------	---------------------------------------------	-----------------------------------------------	-------------------------------	-------------------------



<div>4400</div> <div>↑</div>		<div>HEXPE</div> <div></div>		<div>LITAZ</div> <div>7 NM Holding Pattern</div>	
*LNAV only.		<div>JIPBI</div> <div>2900</div>		<div>038° → 6000</div> <div>← 218° 3800</div>	
<div>RW21</div> <div></div>		<div>*1.2 NM to RW21</div> <div></div>		<div>GP 3.00°</div> <div>TCH 52</div>	
<div>1.2 NM</div>		<div>1.8 NM</div>		<div>6 NM</div>	
CATEGORY	A	B	C	D	E
LPV DA	2106-¾		200 (200-¾)		
LNAV/VNAV DA	2250-7/8		344 (400-7/8)		
LNAV MDA	2340-¾	434 (500-¾)	2340-1½	434 (500-1½)	
 CIRCLING	2360-1 441 (500-1)	2380-1 461 (500-1)	2500-1½ 581 (600-1½)	2700-2½ 781 (800-2½)	2700-2¾ 781 (800-2¾)



SC-3, 03 DEC 2020 to 31 DEC 2020

SC-3, 03 DEC 2020 to 31 DEC 2020