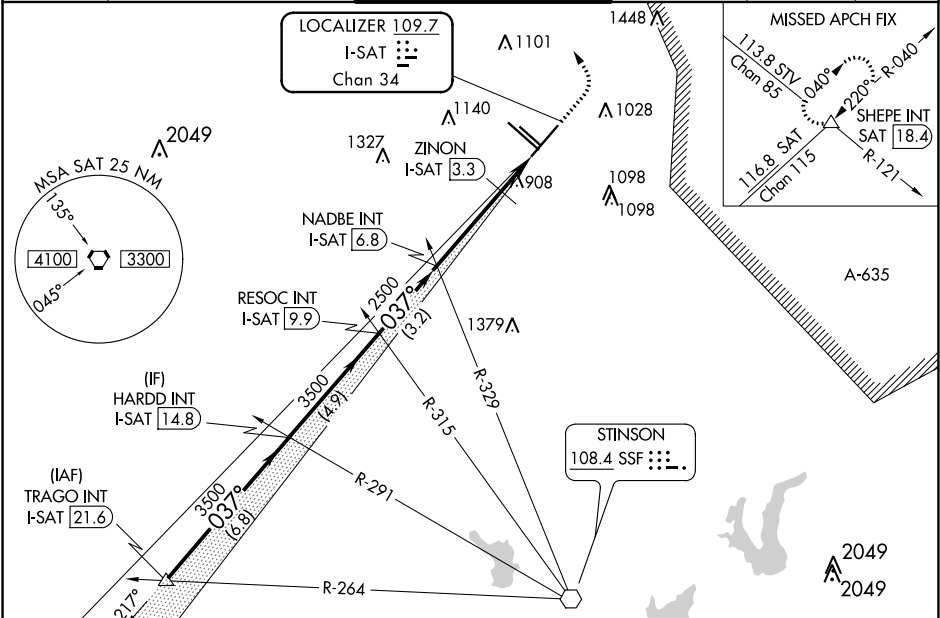


LOC/DME I-SAT 109.7 Chan 34	APP CRS 037°	Rwy ldg 8505 TDZE 786 Apt Elev 809
---	------------------------	---

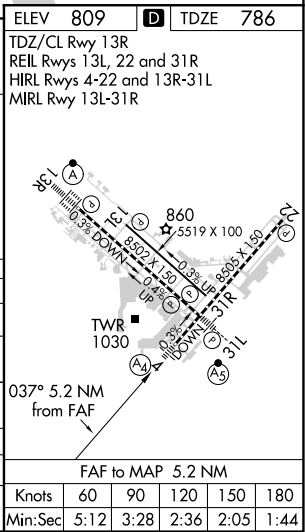
ILS or LOC RWY 4
SAN ANTONIO INTL (SAT)

▼ Inop table does not apply to S-ILS 4. Circling NA west of Rwy 4 and 13R. Autopilot coupled approach NA below 1189. For inop ALS, increase S-LOC 4 Cat D visibility to 1¼ SM. ZINON fix minimums: for inop ALS, increase S-LOC 4 Cat D visibility to RVR 5000.	MALS 	MISSED APPROACH: Climb to 1700 then climbing left turn to 3500 on heading 025° and SAT VORTAC R-040 to SHEPE INT/SAT 18.4 DME and hold.
---	----------	---

D-ATIS 118.9	SAN ANTONIO APP CON 125.1 307.0	SAN ANTONIO TOWER 119.8 257.8	GND CON 121.9 348.6	CLNC DEL 126.7	CPDLC
------------------------	---	---	-------------------------------	--------------------------	-------



VGSI and ILS glidepath not coincident (VGSI Angle 3.00/TCH 79).		1700	3500	SAT	SHEPE
		↑	hdg 025°	R-040	△
		4000	3500	3500	2500
		GS 3.00°	037°	037°	037°
		TCH 56	6.8 NM	4.9 NM	3.2 NM
CATEGORY	A	B	C	D	
S-ILS 4	986/40		200 (200-¾)		
S-LOC 4	1220/40	434 (500-¾)	1220/50	434 (500-1)	
CIRCLING	1300-1	491 (500-1)	1320-1½ 511 (600-1½)	1380-2 571 (600-2)	
ZINON FIX MINIMUMS (DME REQUIRED)					
S-LOC 4	1120/40		334 (400-¾)		
CIRCLING	1300-1	491 (500-1)	1320-1½ 511 (600-1½)	1380-2 571 (600-2)	



SC-3, 03 DEC 2020 to 31 DEC 2020

SC-3, 03 DEC 2020 to 31 DEC 2020