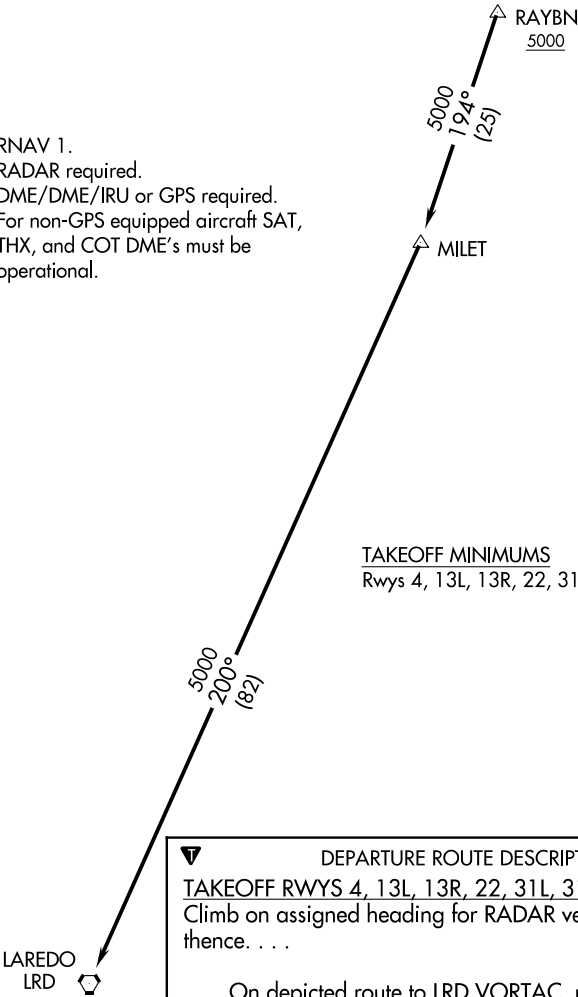


D-ATIS 118.9
CLNC DEL 126.7
CPDLC
GND CON
121.9 348.6
SAN ANTONIO DEP CON
125.1 307.0 (Rwy 04)
125.7 290.225 (Rwys 13/22/31)
SAN ANTONIO TOWER
119.8 257.8

TOP ALTITUDE:
5000



- NOTE: RNAV 1.
NOTE: RADAR required.
NOTE: DME/DME/IRU or GPS required.
NOTE: For non-GPS equipped aircraft SAT, THX, and COT DME's must be operational.



TAKEOFF MINIMUMS
Rwys 4, 13L, 13R, 22, 31L, 31R: Standard.

▼

DEPARTURE ROUTE DESCRIPTION

TAKEOFF RWYS 4, 13L, 13R, 22, 31L, 31R:
Climb on assigned heading for RADAR vectors to RAYBN, thence. . . .

. . . .On depicted route to LRD VORTAC, maintain 5000.
Expect filed altitude 10 minutes after departure.

NOTE: Chart not to scale.

SC-3, 03 DEC 2020 to 31 DEC 2020

SC-3, 03 DEC 2020 to 31 DEC 2020