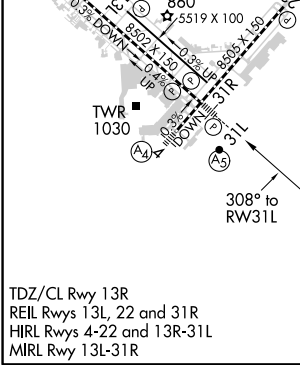
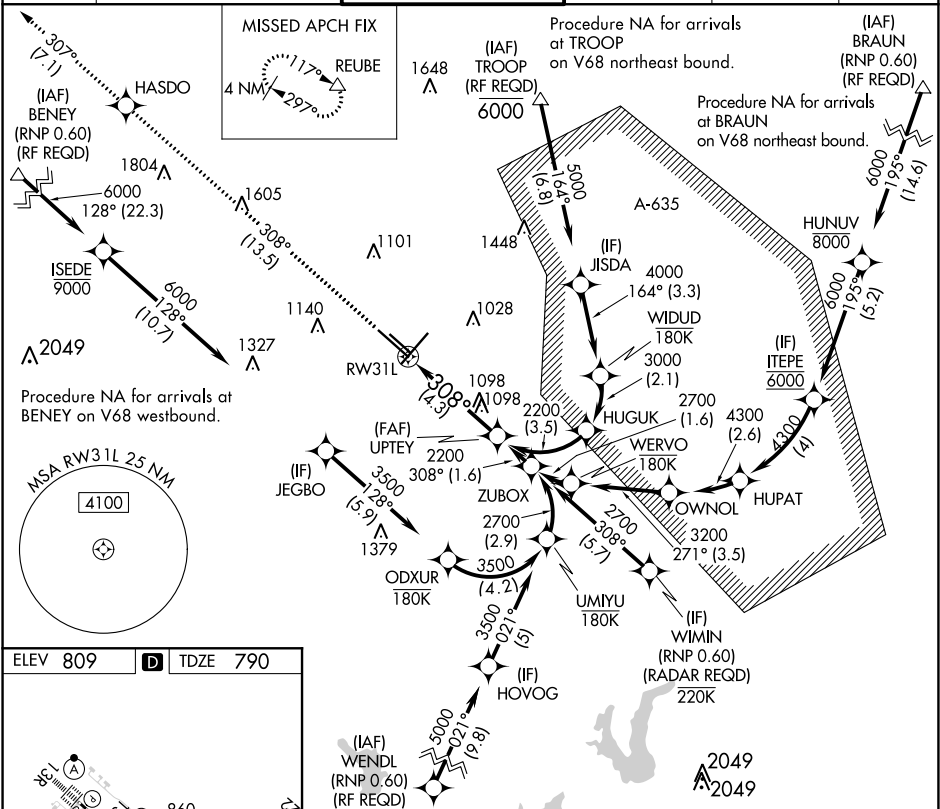


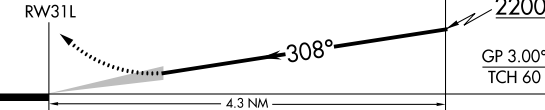
APP CRS	Rwy Idg	8502
308°	TDZE	790
	Apt Elev	809

RNAV (RNP) Z RWY 31L
SAN ANTONIO INTL (SAT)

<p>For uncompensated Baro-VNAV systems, procedure NA below -4°C (25°F) or above 54°C (130°F). GPS required.</p>	<p>MALSR</p>	<p>MISSED APPROACH: Climb to 3000 on track 308° to HASDO then climb to 4200 on track 307° to REUBE and hold.</p>
---	--------------	--

D-ATIS 118.9	SAN ANTONIO APP CON 125.1 307.0	SAN ANTONIO TOWER 119.8 257.8	GND CON 121.9 348.6	CLNC DEL 126.7	CPDLC
-----------------	------------------------------------	----------------------------------	------------------------	-------------------	-------



3000 ↑ tr 308°	HASDO ✦	4200 ↑ tr 307°	REUBE △	VGSIs and RNAV glidepath not coincident (VGSi Angle 3.00°/TCH 82).	
					
CATEGORY	A	B	C	D	
RNP 0.30 DA	1232/50 442 (500-1)				
AUTHORIZATION REQUIRED					

SC-3, 03 DEC 2020 to 31 DEC 2020

SC-3, 03 DEC 2020 to 31 DEC 2020