

SAN ANTONIO, TEXAS

AL-369 (FAA)

20142

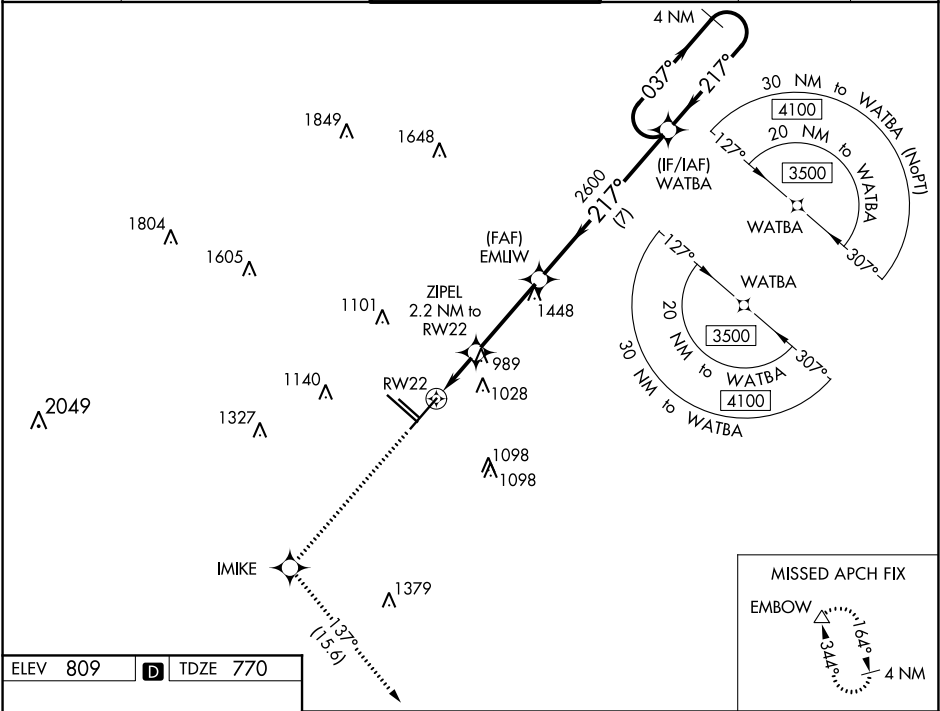
WAAS CH 69430 W22A	APP CRS 217°	Rwy Idg TDZE 770 Apt Elev 809
--	------------------------	---

RNAV (GPS) Y RWY 22
SAN ANTONIO INTL (SAT)

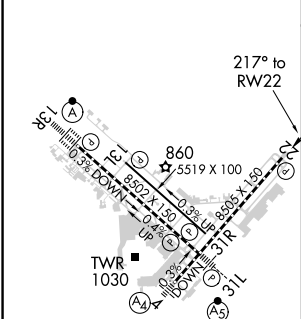
For uncompensated Baro-VNAV systems, LNAV/VNAV NA below -4°C (25°F) or above 54°C (130°F). Circling NA west of Rwy 4 and 13R. DME/DME RNP-0.3 NA.

MISSED APPROACH: Climb to 3100 direct IMIKE and track 137° to EMBOW and hold.

D-ATIS 118.9	SAN ANTONIO APP CON 125.1 307.0	SAN ANTONIO TOWER 119.8 257.8	GND CON 121.9 348.6	CLNC DEL 126.7	CPDLC
------------------------	---	---	-------------------------------	--------------------------	-------



ELEV 809	D	TDZE 770
----------	---	----------



TDZ/CL Rwy 13R
REIL Rwy 13L, 22 and 31R
HIRL Rwy 4-22 and 13R-31L
MIRL Rwy 13L-31R

3100	IMIKE	fr 137°	EMBOW	VGSI and RNAV glidepath not coincident (VGSI Angle 3.00/TCH 85).	4 NM
*LNAV only.				WATBA	Holding Pattern
*1.3 NM to RW22				2600	3500
*1.500				2600	GP 3.00° TCH 55
CATEGORY	A	B	C	D	
LPV	DA	970-3/4	200 (200-3/4)		
LNAV/VNAV	DA	1225-1 5/8	455 (500-1 5/8)		
LNAV	MDA	1240-1 470 (500-1)	1240-1 3/8 470 (500-1 3/8)		
CIRCLING	1300-1 491 (500-1)	1320-1 1/2 511 (600-1 1/2)	1380-2 571 (600-2)		

SAN ANTONIO, TEXAS
Amdt 2B 02MAR17

29°32'N-98°28'W

RNAV (GPS) Y RWY 22
SAN ANTONIO INTL (SAT)

SC-3, 03 DEC 2020 to 31 DEC 2020