

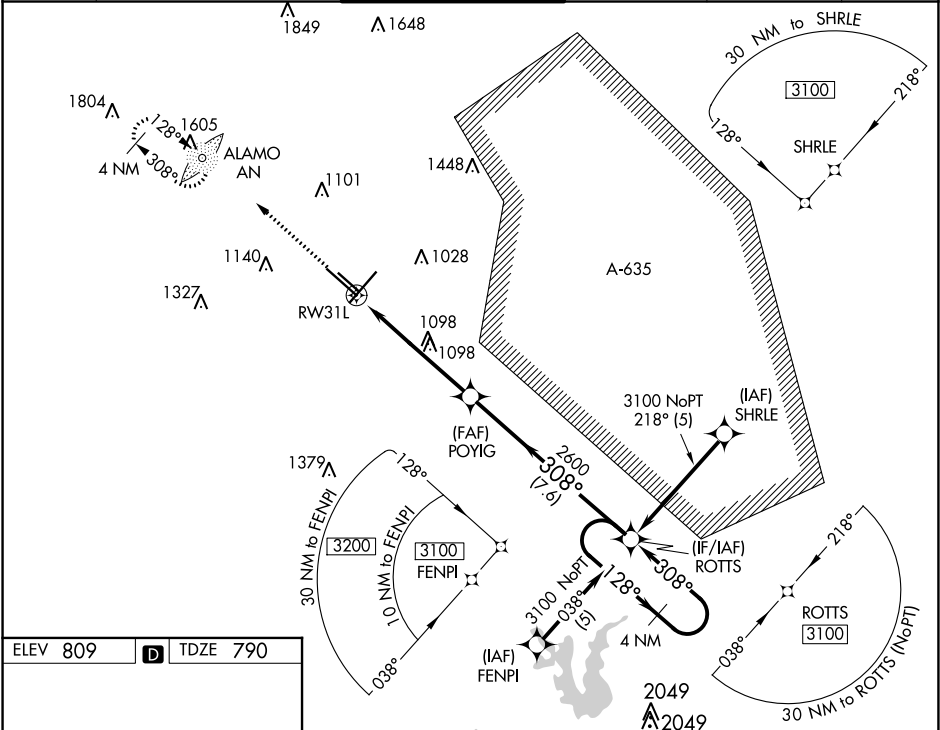


WAAS CH 61209 W31A	APP CRS 308°	Rwy Idg TDZE 790 Apt Elev 809	8502
--	------------------------	---	-------------

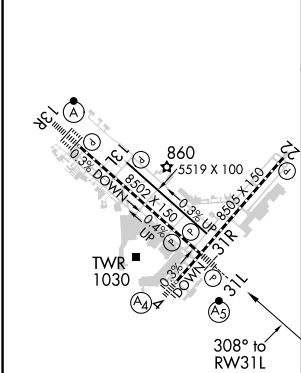
RNAV (GPS) Y RWY 31L
SAN ANTONIO INTL (SAT)

 For uncompensated Baro-VNAV systems, LNAV/VNAV NA below -2°C (29°F) or above 54°C (130°F). Circling NA west of Rwy 4 and 13R. DME/DME RNP-0.3 NA. For inop ALS, increase LPV all Cats visibility to 1½ SM, LNAV/VNAV all Cats visibility to 1½ SM, and LNAV Cats C and D visibility to 1½ SM.	MALSR 	MISSED APPROACH: Climb to 3000 direct ALAMO LOM and hold.
---	--	---

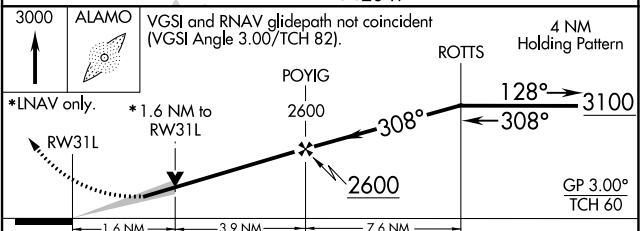
D-ATIS 118.9	SAN ANTONIO APP CON 125.1 307.0	SAN ANTONIO TOWER 119.8 257.8	GND CON 121.9 348.6	CLNC DEL 126.7	CPDLC
------------------------	---	---	-------------------------------	--------------------------	-------



ELEV 809	D	TDZE 790
-----------------	----------	-----------------



TDZ/CL Rwy 13R
REIL Rwy 13L, 22 and 31R
MIRL Rwy 13L-31R
HIRL Rwy 4-22 and 13R-31L



CATEGORY	A	B	C	D
LPV DA	1207/50	417 (400-1)		
LNAV/VNAV DA	1246/60	456 (500-1¼)		
LNAV MDA	1360/24	570 (600-½)	1360-1¼	570 (600-1¼)
CIRCLING	1360-1	551 (600-1)	1360-1¾	1380-2
			551 (600-1¾)	571 (600-2)

SC-3, 03 DEC 2020 to 31 DEC 2020

SC-3, 03 DEC 2020 to 31 DEC 2020