

WAAS CH 77613 W04A	APP CRS 037°	Rwy Idg TDZE 786 Apt Elev 809
--	------------------------	---

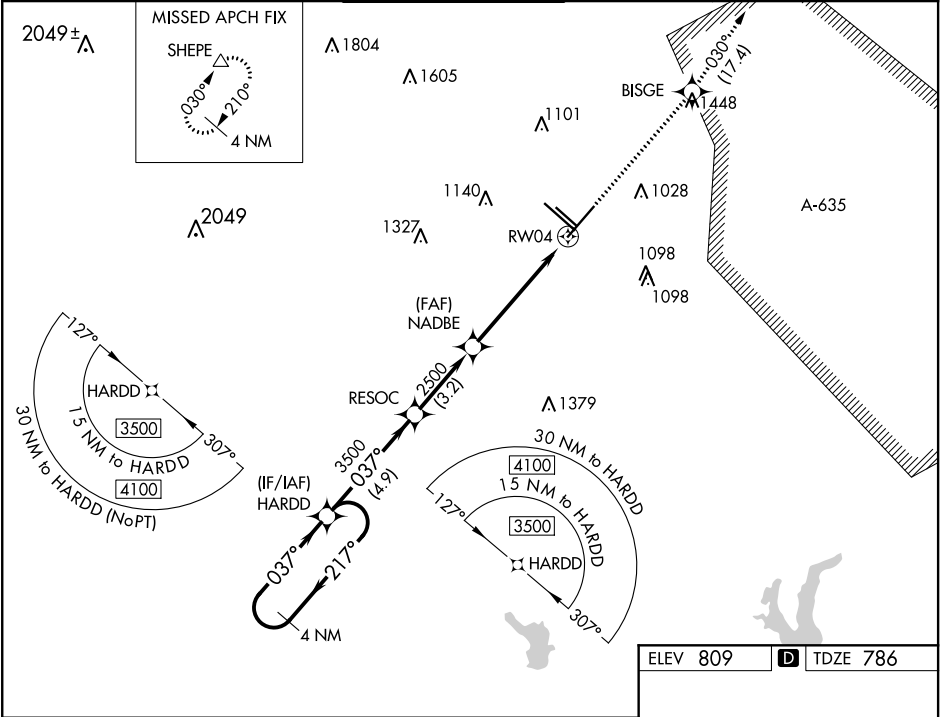
RNAV (GPS) Y RWY 4
SAN ANTONIO INTL (SAT)

▼ Inop table does not apply to LPV. For uncompensated Baro-VNAV systems, LNAV/VNAV NA below -4°C (25°F) or above 54°C (130°F). Circling NA west of Rwy 4 and 13R. DME/DME RNP-0.3 NA. For inop ALS, increase LNAV/VNAV all Cats and LNAV Cats C and D visibility to 1½.

MALS
A4

MISSED APPROACH: Climb to 3500 direct BISGE and track 030° to SHEPE and hold.

D-ATIS 118.9	SAN ANTONIO APP CON 125.1 307.0	SAN ANTONIO TOWER 119.8 257.8	GND CON 121.9 348.6	CLNC DEL 126.7	CPDLC
------------------------	---	---	-------------------------------	--------------------------	-------



VGSI and RNAV glidepath not coincident (VGSI Angle 3.00/TCH 79).			
4 NM Holding Pattern	HARDD	RESOC	
3500	217°	037°	037°
GP 3.00° TCH 56			
	4.9 NM	3.2 NM	3.9 NM
CATEGORY	A	B	C
LPV DA	986/40 200 (200-¾)		
LNAV/VNAV DA	1201/60 415 (400-1¼)		
LNAV MDA	1280/40 494 (500-¾)	1280/60 494 (500-1¼)	
CIRCLING	1300-1 491 (500-1)	1320-1½ 511 (600-1½)	1380-2 571 (600-2)

