

HI-ILS or LOC/DME Z RWY 34

LOC I-OSQ 110.7	APCH CRS 338°	Rwy Idg 11,550 TDZE 660 Arpt Elev 690
---------------------------	-------------------------	--

JAL-371 [USAF]

KELLY FLD (KSKF)

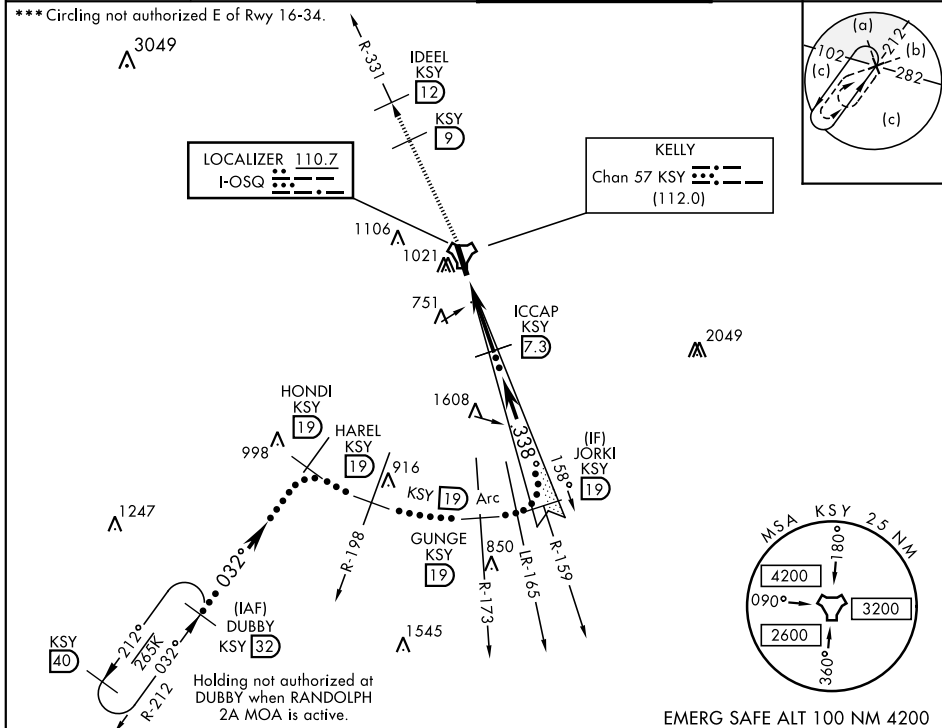
- ▼ * When ALS inop, increase RVR to 40 and vis to $\frac{3}{4}$ mile.
 ** When ALS inop, increase RVR to 55 and vis to 1 mile.



MISSED APPROACH: Climbing to 2500 via KSY TACAN R-331 until 9 DME, cross 9° DME at 2500, then continue climb to 3000 to IDEEL/12.0 DME. Expect ATC instructions.

ATIS 120.45 273.5	SAN ANTONIO APP CON 118.05 353.5	KELLY TOWER 124.3 322.35	GND CON 121.8 289.4
-----------------------------	--	------------------------------------	-------------------------------

*** Circling not authorized E of Rwy 16-34.



2500 KSY R-331	KSY R-331 9	3000 IDEEL KSY 12	DUBBY R-212 32	ELEV 690	TDZE 660
<p>VGSI and descent angles not coincident.</p> <p>TACAN JETKA 1.9</p> <p>ICCAP 7.3</p> <p>JORKE R-198 19</p> <p>HAREL R-173 19</p> <p>HONDI R-212 19</p> <p>DUBBY R-212 32</p> <p>GS 3.00° TCH 60</p>					
CATEGORY	C	D	E		
S-ILS 34 *	860/24	200	(200- $\frac{1}{2}$)		
S-LOC/DME 34 **	1040/35	380	(400- $\frac{1}{2}$)		
CIRCLING ***	1360-1 $\frac{3}{4}$ 670 (700-1 $\frac{3}{4}$)	1440-2 $\frac{1}{2}$ 750 (800-2 $\frac{1}{2}$)	1900-3 1210 (1300-3)		

SAN ANTONIO, TEXAS

29°23'N-98°35'W

KELLY FLD (KSKF)

Amdt 1 13AUG20

HI-ILS or LOC/DME Z RWY 34