
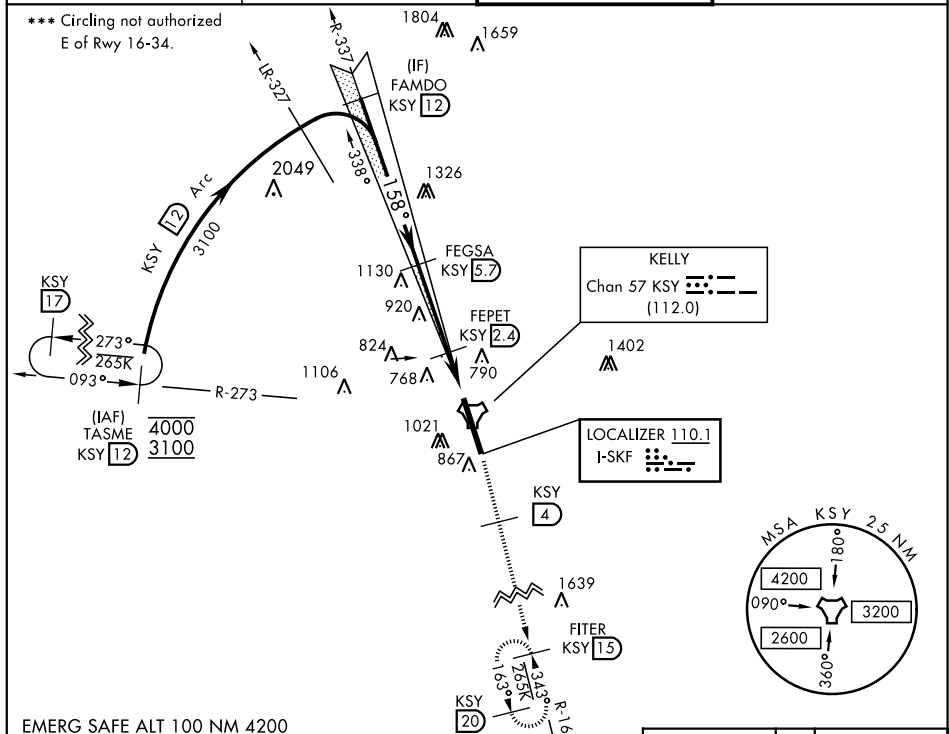


ILS or LOC/DME Y RWY 16

LOC I-SKF <u>110.1</u>	APCH CRS 158°	Rwy Idg 11,550 TDZE 690 Arpt Elev 690	AL-371 [USAF]	KELLY FLD (KSKF)
▼*When ALS inop, increase RVR to 40 and vis to ¼ mile. **When ALS inop, increase CAT AB RVR to 55 and vis to 1 mile, CAT CDE RVR to 60 and vis to 1½ miles.			ALSF-1 	MISSED APPROACH: Climb to 2500 via KSY R-163 until 4 DME, then continue climb to 3000 to FJTER/15 DME and hold. Non-TACAN equipped aircraft expect alternate missed approach instructions.
ATIS 120.45 273.5		SAN ANTONIO APP CON 118.05 353.5	KELLY TOWER 124.3 322.35	GND CON 121.8 289.4



CATEGORY	A	B	C	D	E
S-ILS 16 *	890/24		200	(200-½)	
S-LOC/DME 16 **	1100/24 410 (500-½)		1100/40 410		(500-¾)
CIRCLING ***	1220-1 530 (600-1)	1300-1 610 (700-1)	1360-1¾ 670 (700-1¾)	1440-2½ 750 (800-2½)	1900-3 1210 (1300-3)