

SAN ANTONIO, TEXAS

RNAV (GPS) RWY 16

APCH CRS	Rwy Idg	11,550
158°	TDZE	690
	Arpt Elev	690

AL-371 (USAF)

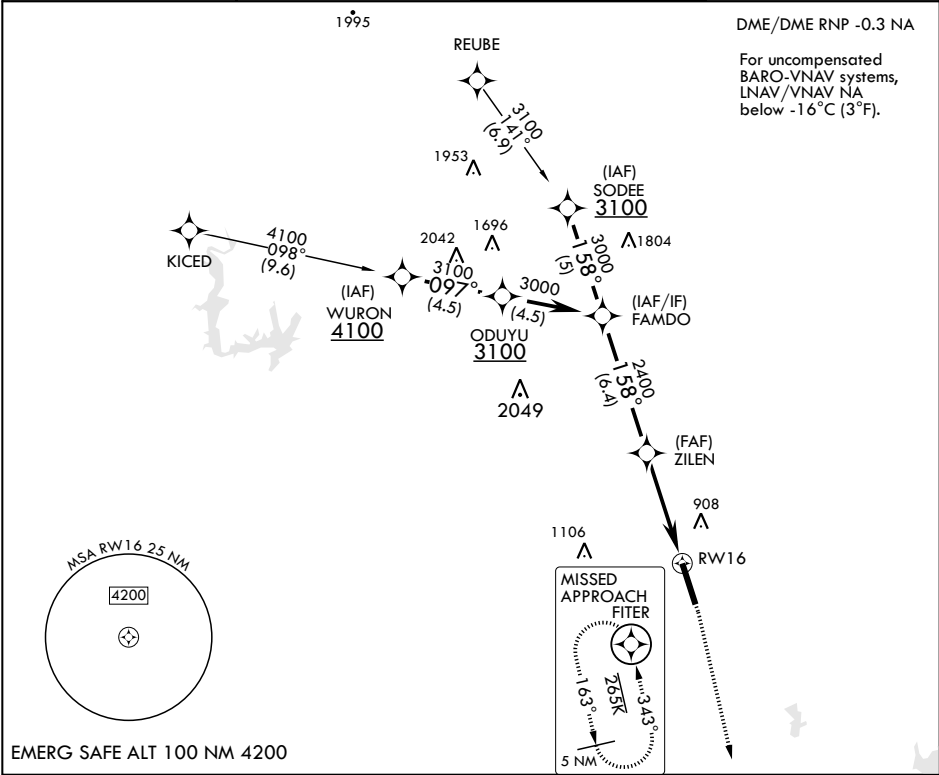
KELLY FIELD (KSKF)

⚠ * When ALS inop, increase all CAT vis to 1 3/4 miles.
** When ALS inop, increase CAT AB RVR to 55, and vis to 1 mile; CAT CDE vis to 1 5/8 miles.
*** Circling not authorized E of Rwy 16-34.

ALSF-1

MISSED APPROACH: Climb to 1500 then climbing right turn to 3000 direct FITER and hold.

ATIS 120.45 273.5	SAN ANTONIO APP CON 118.05 353.5	KELLY TOWER 124.3 322.35	GND CON 121.8 289.4
-----------------------------	--	------------------------------------	-------------------------------



EMERG SAFE ALT 100 NM 4200

FAMD

3000

158°

ZILEN

2400

GP 3.05°
TCH 57

5.1 NM

RW16

†LNAV only

†1.5 NM to RW16

VGS1 and descent angles not coincident.

1500

3000

FITER

ELEV 690

TDZE 690

158° to RW16

707

TWR 780

727

BCN

855

857

713

34

HIRL all Rwys

CATEGORY	A	B	C	D	E
LNAV/VNAV DA*	1080/35		390 (400-%)		
LNAV MDA**	1260/24 570 (600-1/2)		1260-1 1/4 570 (600-1 1/4)		
C CIRCLING***	1260-1 570 (600-1)	1300-1 610 (700-1)	1360-1 3/4 670 (700-1 3/4)	1440-2 1/2 750 (800-2 1/2)	1900-3 1210 (1300-3)

SAN ANTONIO, TEXAS

29°23'N - 98°35'W

KELLY FIELD (KSKF)

Amdt 1 10OCT19

RNAV (GPS) RWY 16

SC-3, 03 DEC 2020 to 31 DEC 2020

SC-3, 03 DEC 2020 to 31 DEC 2020