

## TACAN Y RWY 16

TACAN KSY Chan <b>57</b>	APCH CRS <b>151°</b>	Rwy Idg <b>11,550</b> TDZE <b>690</b> Arpt Elev <b>690</b>
-----------------------------	-------------------------	--

AL-371 [USAF]

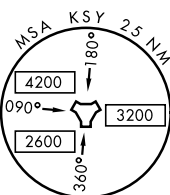
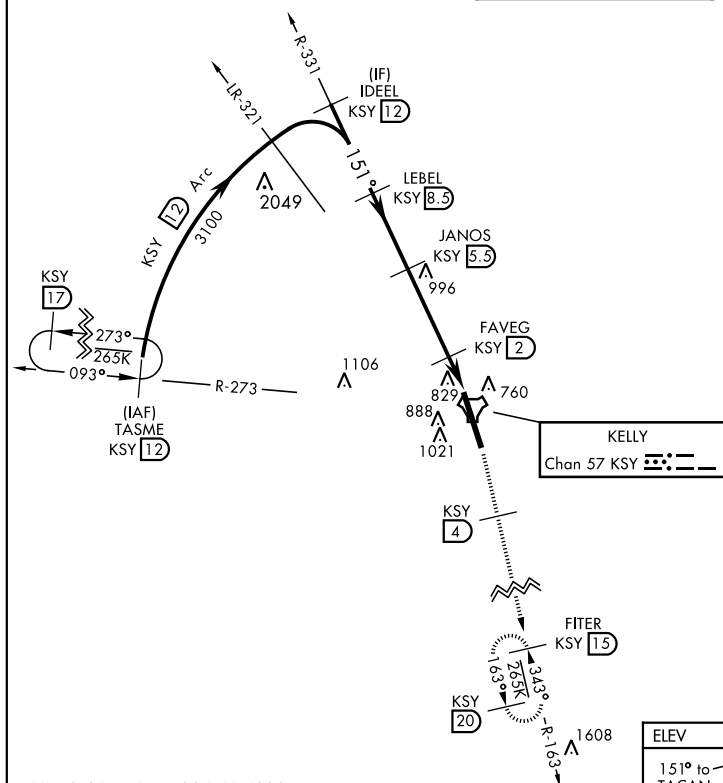
KELLY FLD (KSKF)

**T** \* When ALS inop, increase CAT AB RVR to 55 and vis to 1 mile, CAT CDE RVR to 60 and vis to 1½ miles.  
\*\* Circling not authorized E of Rwy 16-34.

ALSF-1

**MISSED APPROACH:** Climb on 2500 via KSY R-163 until 4 DME, then climb to 3000 to FITER/15 DME and hold.

ATIS 120.45 273.5	SAN ANTONIO APP CON 118.05 353.5	KELLY TOWER 124.3 322.35	GND CON 121.8 289.4
----------------------	-------------------------------------	-----------------------------	------------------------



EMERG SAFE ALT 100 NM 4200

