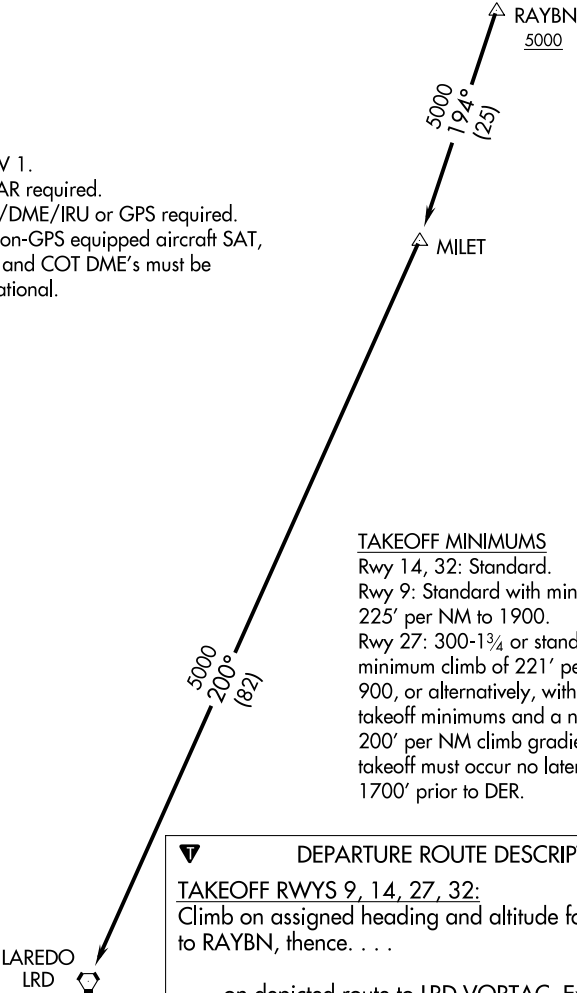


ATIS 128.8  
CLNC DEL  
121.7  
GND CON  
121.7 379.9  
SAN ANTONIO DEP CON  
125.7 290.225  
STINSON TOWER★  
118.2 379.9

- NOTE: RNAV 1.  
NOTE: RADAR required.  
NOTE: DME/DME/IRU or GPS required.  
NOTE: For non-GPS equipped aircraft SAT, THX, and COT DME's must be operational.



**TAKEOFF MINIMUMS**  
Rwy 14, 32: Standard.  
Rwy 9: Standard with minimum climb of 225' per NM to 1900.  
Rwy 27: 300-1¾ or standard with a minimum climb of 221' per NM to 900, or alternatively, with standard takeoff minimums and a normal 200' per NM climb gradient, takeoff must occur no later than 1700' prior to DER.

**DEPARTURE ROUTE DESCRIPTION**  
**TAKEOFF RWYS 9, 14, 27, 32:**  
Climb on assigned heading and altitude for RADAR vectors to RAYBN, thence. . . .  
. . . .on depicted route to LRD VORTAC. Expect filed altitude 10 minutes after departure.

SC-3, 03 DEC 2020 to 31 DEC 2020

SC-3, 03 DEC 2020 to 31 DEC 2020