

APP CRS 332°	Rwy Idg 3756 TDZE 570 Apt Elev 577
------------------------	---

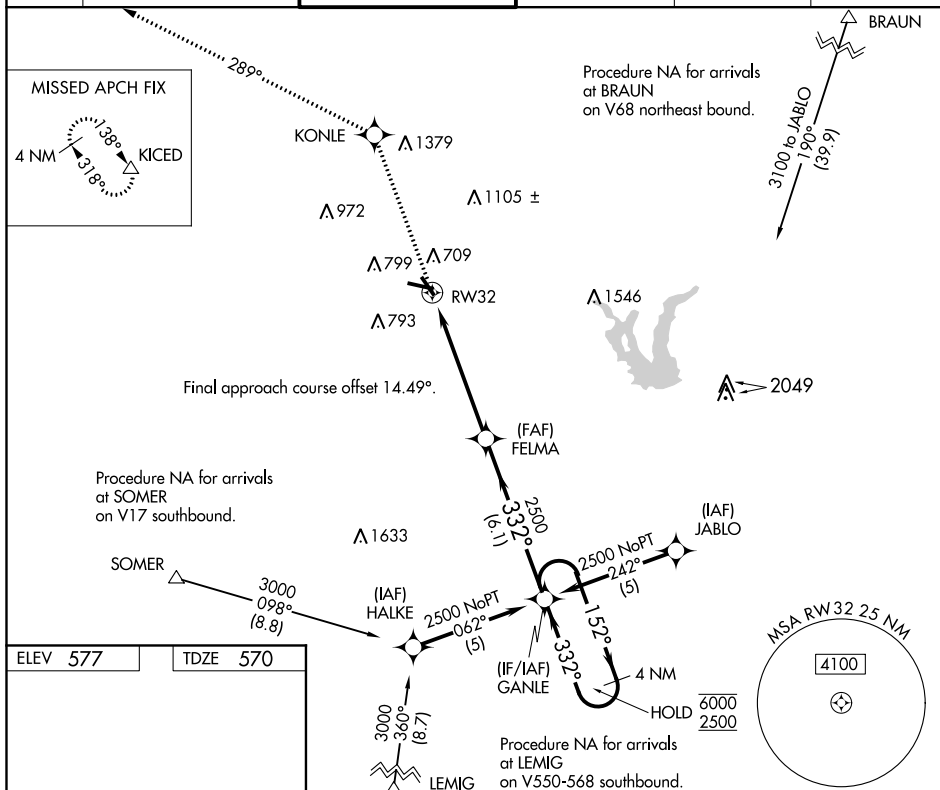
RNAV (GPS) RWY 32
STINSON MUNI (SSF)

RNP APCH.

T Rwy 32 helicopter visibility reduction below 1 SM NA.
Straight-in Rwy 32 NA at night, Circling Rwy 9, 32 NA at night.

MISSED APPROACH: Climb to 4100 direct KONLE and on track 289° to KICED and hold.

ATIS 128.8	SAN ANTONIO APP CON 125.7 290.225	STINSON TOWER ★ 118.2 (CTAF) 379.9	GND CON 121.7 379.9	CLNC DEL 121.7	UNICOM 122.95
----------------------	---	--	-------------------------------	--------------------------	-------------------------



REIL Rwy 9, 14, 27 and 32
MIRL Rwy 9-27 and 14-32

Diagram illustrating the RW32 holding pattern and approach. The pattern is a 4 NM holding pattern with a 152° turn and a 332° turn. The approach is 332° to RW32, with a 3.23° climb gradient and a 40-foot threshold. The diagram also shows the TWR, VGS, and various navigation aids.