

WAAS CH 65919 W01A	APP CRS 007°	Rwy Idg TDZE 511 Apt Elev 516	7005
--	------------------------	---	-------------

RNAV (GPS) RWY 1

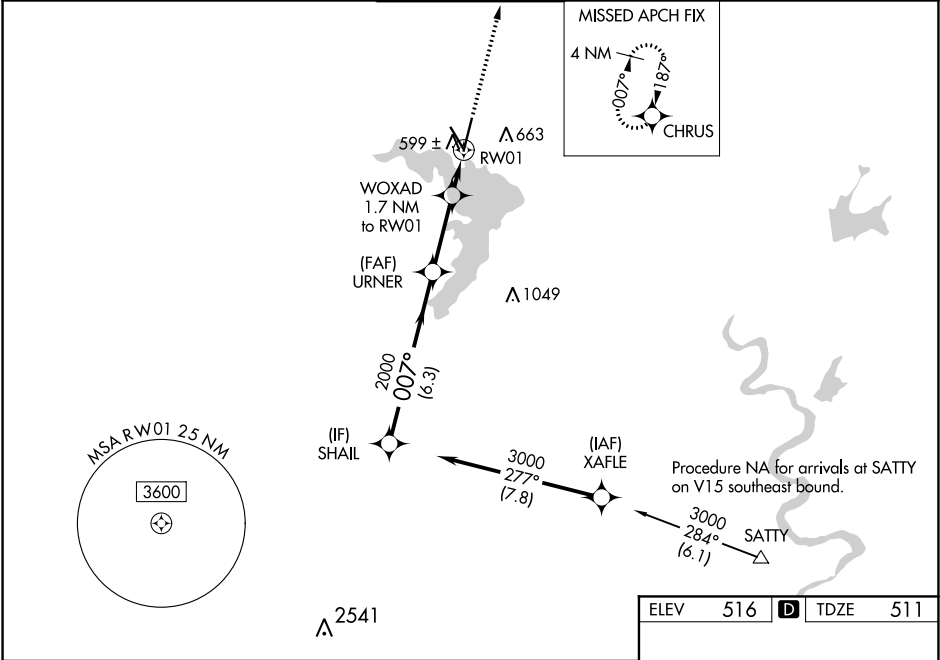
WACO RGNL (ACT)

⚠ For uncompensated Baro-VNAV systems, LNAV/VNAV NA below -7°C (19°F) or above 54°C (130°F).

⚠ DME/DME RNP-0.3 NA. When local altimeter setting not received, use McGregor Executive altimeter setting and increase all DA 31 feet and all MDA 40 feet; increase LPV all Cats and LNAV/VNAV all Cats visibility 1/8 mile and Circling Cat D 1/4 mile. Baro-VNAV and VDP NA with McGregor Executive altimeter setting. Helicopter visibility reduction below 3/4 SM NA.

MISSED APPROACH:
Climb to 3000 direct CHRUS and hold.

ATIS 123.85	WACO APP CON ★ 127.65 227.125	WACO TOWER ★ 119.3 (CTAF) 0 257.8	GND CON 121.9	UNICOM 122.95
-----------------------	---	---	-------------------------	-------------------------



SHAIL

URNER

WOXAD

CHRUS

3000

2000

2000

3000

GP 3.00°
TCH 55

6.3 NM

2.8 NM

0.8 NM

0.9 NM

CATEGORY

A

B

C

D

LPV DA

761-¾

250 (300-¾)

LNAV/
VNAV DA

782-⅞

271 (300-⅞)

LNAV MDA

860-1

349 (400-1)

CIRCLING

940-1
424 (500-1)

980-1
464 (500-1)

1020-1½
504 (600-1½)

1160-2
644 (700-2)

007°

*1100

*1.7 NM to RW01

*0.9 NM to RW01

RW01

*LNAV only.

