

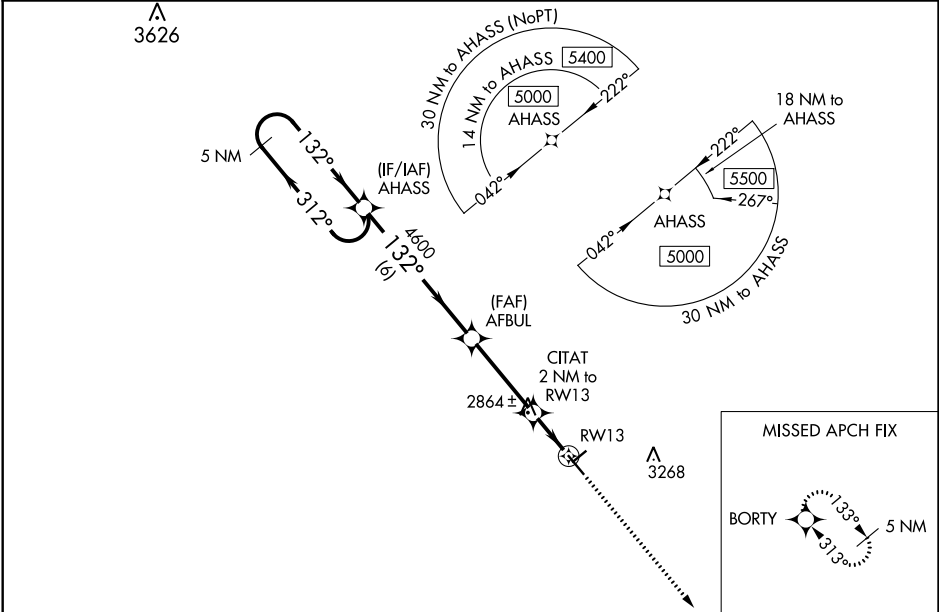
WAAS CH <b>93831</b> <b>W13A</b>	APP CRS <b>132°</b>	Rwy Idg TDZE <b>2822</b> Apt Elev <b>2822</b>
--	------------------------	---

RNAV (GPS) RWY 13  
WINKLER COUNTY (INK)

**⚠** Baro-VNAV NA when using Pecos altimeter setting. For uncompensated Baro-VNAV systems, LNAV/VNAV NA below -20°C (-4°F) or above 54°C (130°F). DME/DME RNP-0.3 NA. VDP NA with Pecos altimeter setting. Helicopter visibility reduction below 3/4 SM NA. When local altimeter setting not received, use Pecos altimeter setting and increase all DA 95 feet and all MDA 100 feet. Increase LPV and LNAV/VNAV all Cats visibility 3/8 mile, LNAV and Circling Cat C visibility 1/4 mile.

**MISSED APPROACH:**  
Climb to 5000 direct BORTY and hold.

AWOS-3 <b>118.325</b>	FORT WORTH CENTER <b>133.1 298.95</b>	UNICOM <b>123.0 (CTAF) 0</b>
--------------------------	--	---------------------------------



**ELEV 2822** **TDZE 2822**

5000 BORTY

GP 3.00° TCH 45

VGSI and RNAV glidepath not coincident (VGSI Angle 3.00/TCH 22).

5 NM Holding Pattern AHASS

312° 132° 132°

6 NM 3.4 NM 1.2 NM 0.8 NM

\* 3500

\* 0.8 NM to RW13

\* LNAV only

MIRL Rwy 4-22 and 13-31 0

CATEGORY	A	B	C	D
LPV DA	3072-3/4	250 (300-3/4)		NA
LNAV/VNAV DA	3072-3/4	250 (300-3/4)		NA
LNAV MDA	3120-1	298 (300-1)	3120-7/8 298 (300-7/8)	NA
CIRCLING	3280-1	458 (500-1)	3580-2 1/4 758 (800-2 1/4)	NA

SC-3, 03 DEC 2020 to 31 DEC 2020

SC-3, 03 DEC 2020 to 31 DEC 2020