

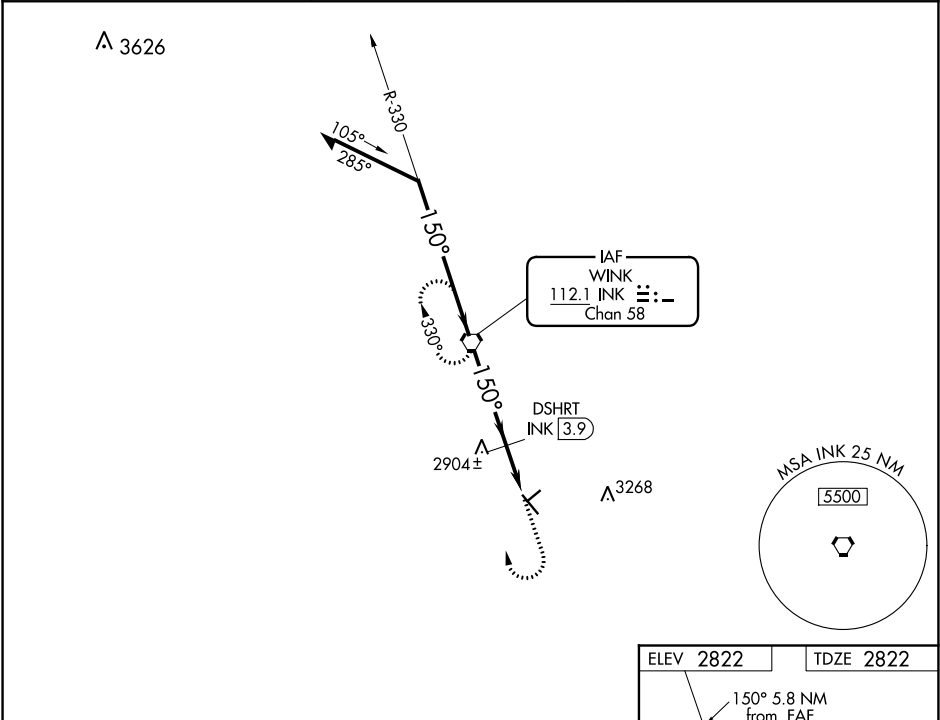
VORTAC INK	APP CRS	Rwy Idg	5003
112.1	150°	TDZE	2822
Chan 58		Apt Elev	2822

VOR RWY 13
WINKLER COUNTY (INK)

⚠ When local altimeter setting not received, use Pecos altimeter setting and increase all MDAs 100 feet and Cat C visibility ¼ mile and increase DSHRT Fix: all MDA 100 feet and S-13 Cat C visibility ¼ mile. VDP NA when using Pecos altimeter setting.

⚠ MISSED APPROACH: Climb to 3500 then climbing right turn to 5000 direct INK VORTAC and hold.

AWOS-3 118.325	FORT WORTH CENTER 133.1 298.95	UNICOM 123.0 (CTAF) 0
-------------------	-----------------------------------	--------------------------



Remain within 10 NM		INK VORTAC		*3440 when using Pecos altimeter setting.		3500	5000	INK
5000		330°		2.99° TCH 40		DSHRT INK 3.9		1 NM to RWY 13 INK 4.8 INK 5.8
4700		150°		150°		*3340		
VGSI and descent angles not coincident (VGSI Angle 3.00/TCH 22).		3.9 NM		0.9		1 NM		
CATEGORY	A	B		C		D		
S-13	3340-1	518 (600-1)		3340-1½ 518 (600-1½)		NA		
CIRCLING	3340-1	518 (600-1)		3340-1½ 518 (600-1½)		NA		
DSHRT FIX MINIMUMS								
S-13	3160-1		338 (400-1)		NA			
CIRCLING	3280-1 458 (500-1)	3300-1 478 (500-1)	3300-1½ 478 (500-1½)		NA			

