

WAAS CH 42629 W13A	APP CRS 128°	Rwy Idg TDZE Apt Elev	5997 178 178
--	------------------------	-----------------------------	---

RNAV (GPS) RWY 13

ALICE INTL (ALI)

RNP APCH.

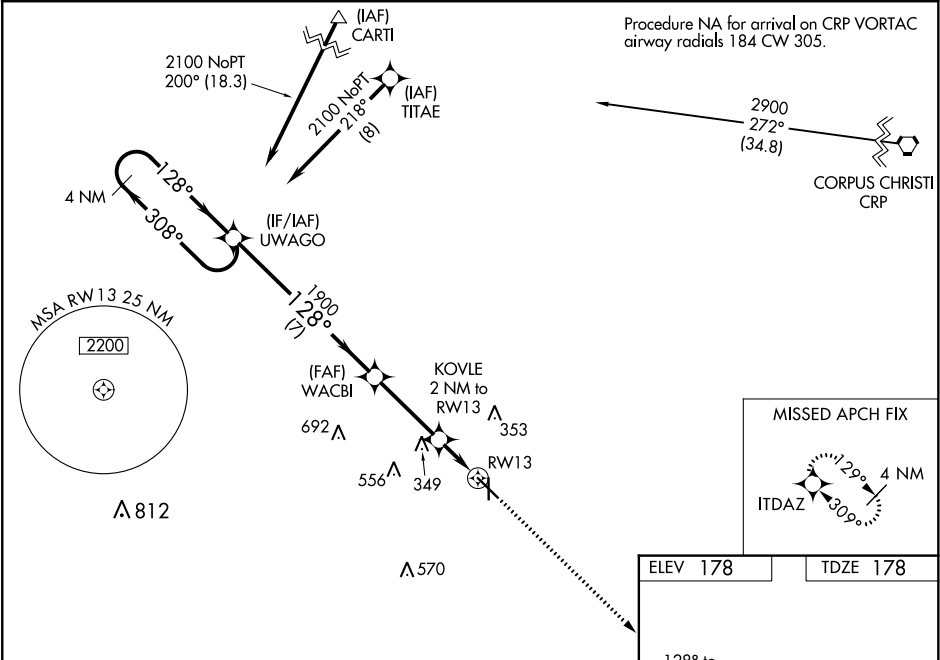
▼

▲

Baro-VNAV NA when using Nueces County altimeter setting. For uncompensated Baro-VNAV systems, LNAV/VNAV NA below -3°C or above 42°C. When local altimeter setting not received, use Nueces County altimeter setting and increase all DA 56 feet and all MDA 60 feet, increase LPV and LNAV/VNAV visibility all Cats ¼ mile and LNAV Cat C and D ½ mile. Rwy 13 helicopter visibility reduction below ¾ SM NA. VDP NA with Nueces County altimeter setting.

MISSED APPROACH: Climb to 2600 direct ITDAZ and hold.

ASOS 119.225	KINGSVILLE APP CON ★ 119.9 290.45	UNICOM 123.0 (CTAF) 0
------------------------	---	---------------------------------



4 NM Holding Pattern		2600		ITDAZ	
GP 3.00° TCH 50		*LNAV only.			
2100 ← 308° 128° →		WACBI 1900		KOVLE 2 NM to RW13	
		1900		*1 NM to RW13	
		*860		RW13	
		7 NM		3.3 NM	
		1 NM		1 NM	
CATEGORY	A	B	C	D	
LPV DA	428-¾ 250 (300-¾)				
LNAV/VNAV DA	428-¾ 250 (300-¾)				
LNAV MDA	560-1 382 (400-1)		560-1½ 382 (400-1½)		

4 NM Holding Pattern

UWAGO

WACBI 1900

KOVLE 2 NM to RW13

*LNAV only.

2600

ITDAZ

2100 ← 308°
128° →

GP 3.00°
TCH 50

1900

*860

1 NM to RW13

RW13

7 NM

3.3 NM

1 NM

1 NM

CAT

230

5927 X 100

4487 X 100

35

REIL Rwy 13

MIRL Rwy 13-31 and 17-35