

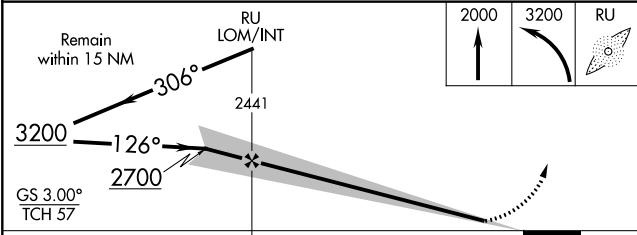
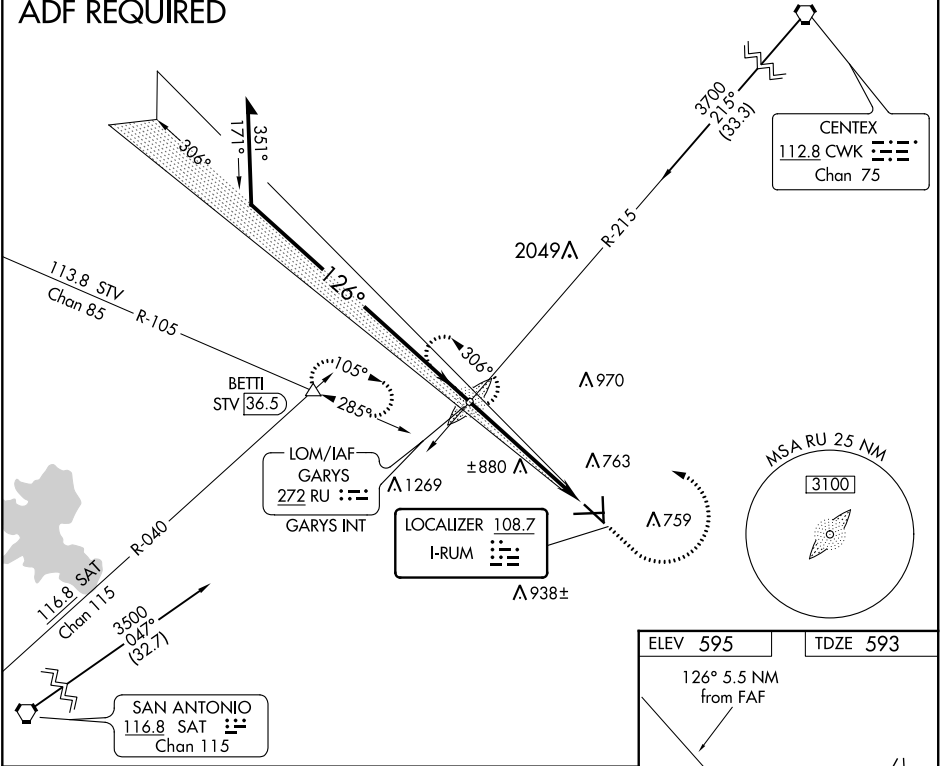
LOC I-RUM 108.7	APP CRS 126°	Rwy Idg TDZE Apt Elev 5601 593 595
---------------------------	------------------------	--

ILS or LOC RWY 13
SAN MARCOS RGNL (HYI)

NA Circling Cat E NA southwest of Rwy 13-31. For inop MALSR, increase S-ILS 13 Cat E visibility ¼ mile, and S-LOC 13 Cat E ½ mile. ADF required.	MALSR 	MISSED APPROACH: Climb to 2000 then climbing left turn to 3200 direct GARYS LOM and hold.
--	-----------	---

ATIS ★ 120.825	AUSTIN APP CON 119.0 370.85	SAN MARCOS TOWER ★ 126.825 (CTAF) L	GND CON 120.125	CLNC DEL 120.125	CLNC DEL 121.35 (when twr closed)
--------------------------	---------------------------------------	--	---------------------------	----------------------------	--

ADF REQUIRED



CATEGORY	A	B	C	D	E
S-ILS-13	793-1/2 200 (200-1/2)				
S-LOC-13	1260-1/2 667 (700-1/2)	1260-1 667 (700-1 1/4)	1260-1 1/2 667 (700-1 1/2)	1260-2 667 (700-2)	
CIRCLING	1260-1 665 (700-1)	1260-1 3/4 665 (700-1 3/4)	1320-2 1/4 725 (800-2 1/4)	1340-2 3/4 745 (800-2 3/4)	

