

LOM RU	APP CRS	Rwy Idg	5601
272	125°	TDZE	593
		Apt Elev	595

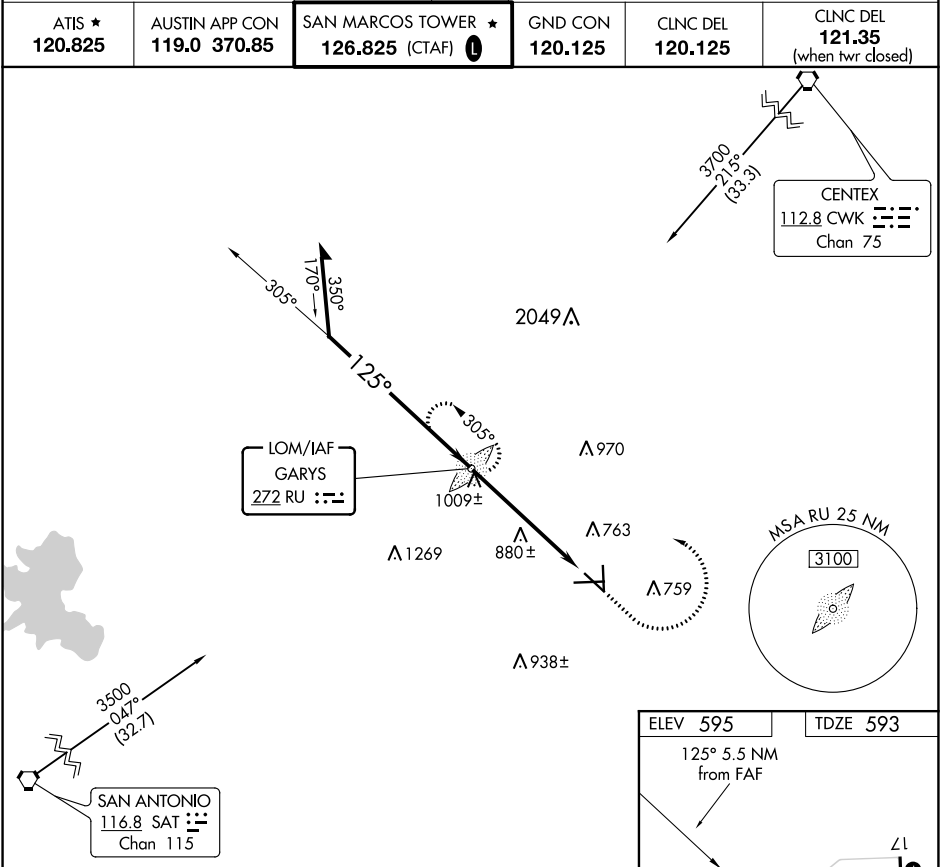
NDB RWY 13
SAN MARCOS RGNL (HYI)

NA

MALS R

MISSED APPROACH: Climb to 2000 then climbing left turn to 3200 direct RU LOM and hold.

ATIS ★ 120.825	AUSTIN APP CON 119.0 370.85	SAN MARCOS TOWER ★ 126.825 (CTAF) L	GND CON 120.125	CLNC DEL 120.125	CLNC DEL 121.35 (when twr closed)
-------------------	--------------------------------	--	--------------------	---------------------	---



Remain within 10 NM		RU LOM	2000	3200	RU
3200		305°			
3200		125°			
2700		3.49°	5.5 NM		
		TCH 55			
CATEGORY	A	B	C	D	
S-13	1240-3/4	647 (700-3/4)	1240-1 1/4 647 (700-1 1/4)	1240-1 3/4 647 (700-1 3/4)	
CIRCLING	1240-1	645 (700-1)	1240-1 3/4 645 (700-1 3/4)	1320-2 1/4 725 (800-2 1/4)	

