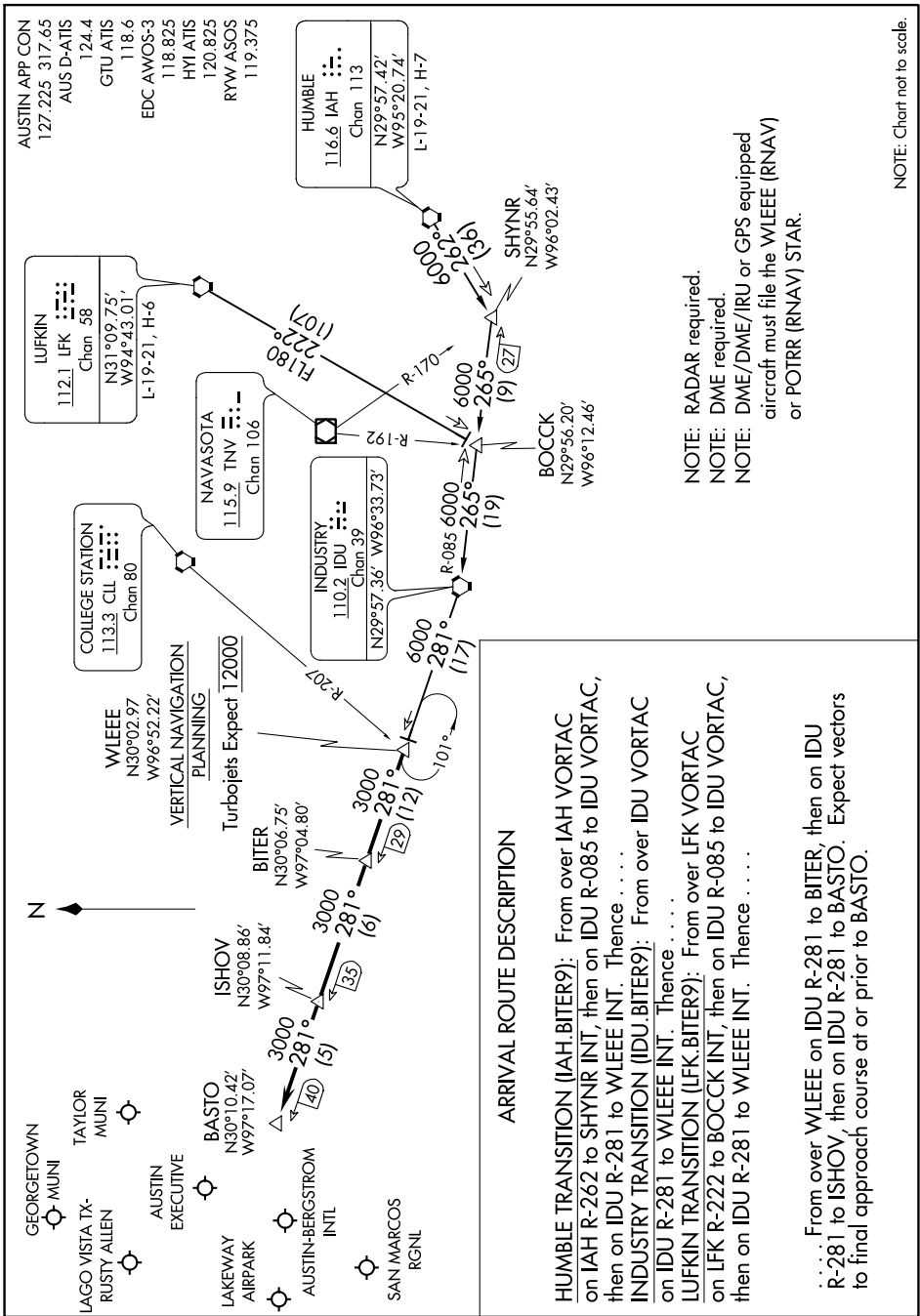


SC-3, 03 DEC 2020 to 31 DEC 2020



NOTE: Chart not to scale.

ARRIVAL ROUTE DESCRIPTION

HUMBLE TRANSITION (IAH.BITER9): From over IAH VORTAC, on IAH R-262 to SHYNR INT, then on IDU R-085 to IDU VORTAC, then on IDU R-281 to WLEEE INT. Thence

INDUSTRY TRANSITION (IDU.BITER9): From over IDU VORTAC on IDU R-281 to WLEEE INT. Thence

LUFKIN TRANSITION (LUFK.BITER9): From over LFK VORTAC on LFK R-222 to BOCCK INT, then on IDU R-085 to IDU VORTAC, then on IDU R-281 to WLEEE INT. Thence

. From over WLEEE on IDU R-281 to BITER, then on IDU R-281 to ISHOV, then on IDU R-281 to BASTO. Expect vectors to final approach course at or prior to BASTO.

SC-3, 03 DEC 2020 to 31 DEC 2020