

LOC/DME I-VNK 110.5 Chan 42	APP CRS 175°	Rwy Idg 9000 TDZE 492 Apt Elev 542	ILS RWY 17L (SA CAT I) AUSTIN-BERGSTROM INTL (AUS)
---	------------------------	---	---

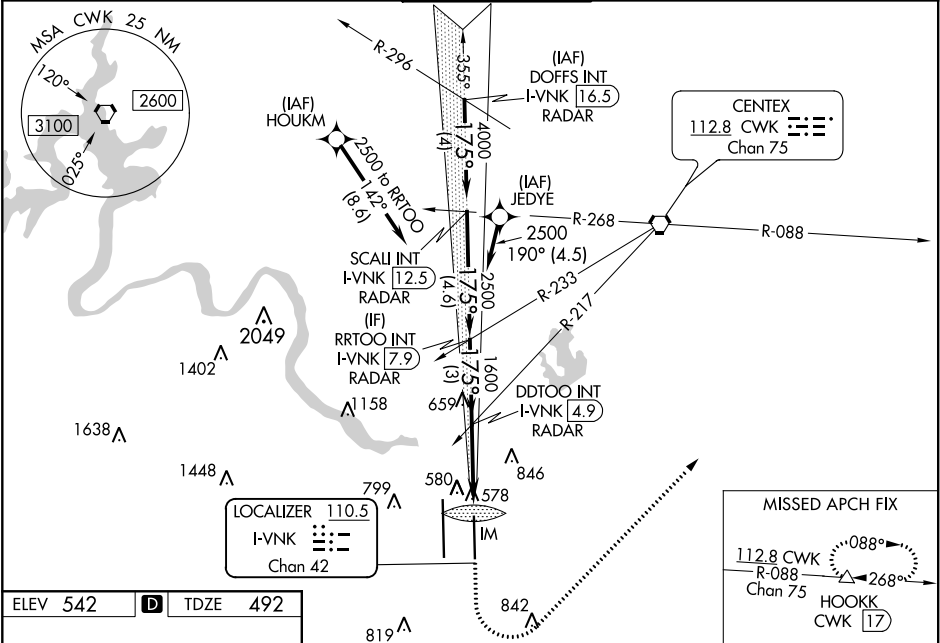
RNAV 1- GPS or RADAR required for procedure entry.
DME required.
From HOUKM, JEDYE: RNAV 1- GPS required.

Simultaneous approach authorized. Requires specific OPSPEC, MSPEC or LOA approval and use of HUD to DH.

ALSIF-2

MISSED APPROACH: Climb to 1000, then climbing left turn to 3000 on heading 040° and CWK VORTAC R-088 to HOOKK/CWK 17 DME and hold.

D-ATIS 124.4	AUSTIN APP CON 127.225 317.65 (EAST) 120.875 270.25 (SOUTH) 119.0 370.85 (WEST)	AUSTIN TOWER 121.0 281.5	GND CON 121.9 348.6	CLNC DEL 125.5 263.0	CPDLC
------------------------	---	------------------------------------	-------------------------------	--------------------------------	-------



ELEV 542 TDZE 492

TDZ/CL Rwy 17L and 35R
HIRL Rwy 17L-35R and 17R-35L

VGSI and ILS glidepath not coincident (VGSI Angle 3.00/TCH 74).

MISSED APCH FIX
112.8 CWK R-088 Chan 75
HOOKK CWK 17

DOFFS INT I-VNK 16.5 RADAR

SCALI INT I-VNK 12.5 RADAR

RRTOO I-VNK 7.9 RADAR

DDTOO I-VNK 4.9 RADAR

5000 175°

4000 175°

2500 175°

1600 175°

GS 3.00° TCH 61

4 NM

4.6 NM

3 NM

3.3 NM

1201'

CATEGORY	A	B	C	D
S-ILS 17L	RA 155/14 150 DA 642			

SA CATEGORY I - SPECIAL AIRCREW & AIRCRAFT CERTIFICATION REQUIRED