

LOC/DME I-VNK <b>110.5</b> Chan <b>42</b>	APP CRS <b>175°</b>	Rwy Idg <b>9000</b> TDZE <b>492</b> Apt Elev <b>542</b>
-------------------------------------------------	------------------------	---------------------------------------------------------------

ILS or LOC RWY 17L  
AUSTIN-BERGSTROM INTL (AUS)

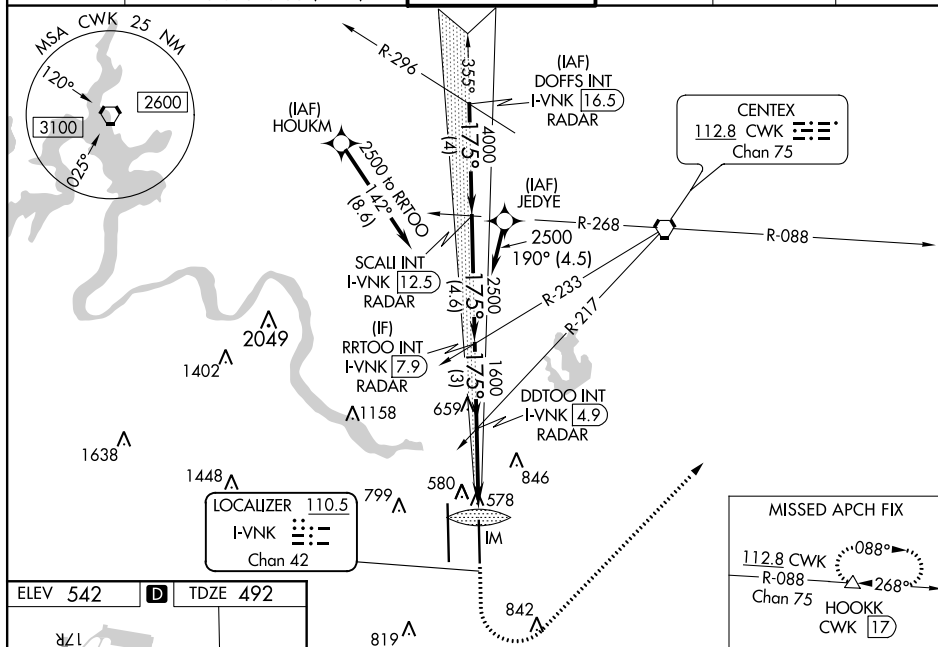
RNAV 1- GPS or RADAR required for procedure entry.  
DME required.  
From HOUKM, JEDYE: RNAV 1- GPS required.

ALSF-2

**MISSED APPROACH:** Climb to 1000, then climbing left turn to 3000 on heading 040° and CWK VORTAC R-088 to HOOKK/CWK 17 DME and hold.

**T** Simultaneous approach authorized. For inop ALS, increase S-ILS 17L Cat E visibility to RVR 4000, and S-LOC 17L Cats C, D, E visibility to RVR 5500.

D-ATIS	AUSTIN APP CON		AUSTIN TOWER		GND CON	CLNC DEL	CPDLC
124.4	127.225	317.65 (EAST)	121.0	281.5	121.9	348.6	
	120.875	270.25 (SOUTH)					
	119.0	370.85 (WEST)					



FAF to MAP 3.3 NM					
Knots	60	90	120	150	180
Min:Sec	3:17	2:12	1:39	1:19	1:06

AUSTIN, TEXAS  
Amdt 3A 19JUL18

30°12'N-97°40'W

AUSTIN-BERGSTROM INTL (AUS)  
ILS or LOC RWY 17L

SC-3, 03 DEC 2020 to 31 DEC 2020

SC-3, 03 DEC 2020 to 31 DEC 2020