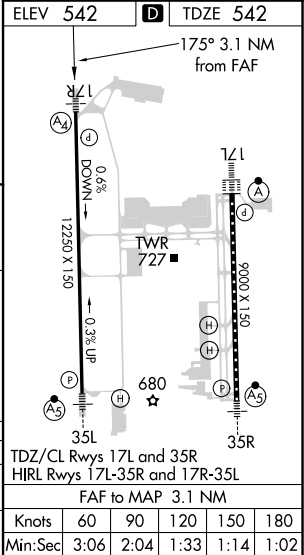
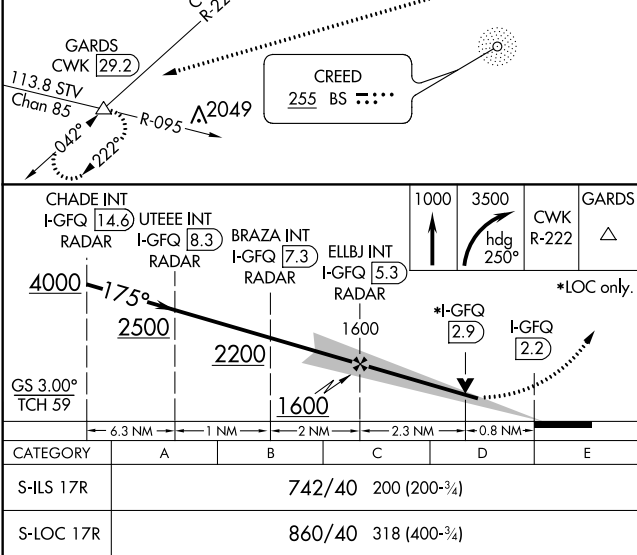
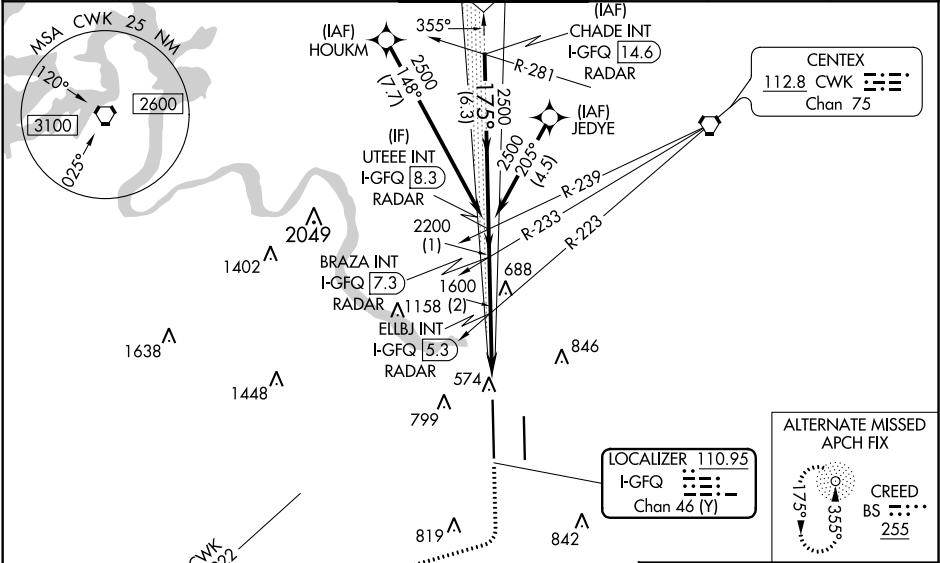


LOC/DME I-GFQ	APP CRS	Rwy Idg	12250
110.95	175°	TDZE	542
Chan 46(Y)		Apt Elev	542

ILS or LOC RWY 17R  
AUSTIN-BERGSTROM INTL (AUS)

RNAV 1 - GPS or RADAR required for procedure entry. From HOUKM, JEDYE: RNAV 1 - GPS required.	MALS A4	MISSED APPROACH: Climb to 1000 then climbing right turn to 3500 on heading 250° and CWK VORTAC R-222 to GARDS INT/CWK 29.2 DME and hold.
Simultaneous approach authorized. For inop ALS, increase S-LOC 17R Cats C/D/E visibility to RVR 4500.		

D-ATIS 124.4	AUSTIN APP CON 127.225 317.65 (EAST) 120.875 270.25 (SOUTH) 119.0 370.85 (WEST)	AUSTIN TOWER 121.0 281.5	GND CON 121.9 348.6	CLNC DEL 125.5 263.0	CPDLC
-----------------	--	-----------------------------	------------------------	-------------------------	-------



SC-3, 03 DEC 2020 to 31 DEC 2020

SC-3, 03 DEC 2020 to 31 DEC 2020