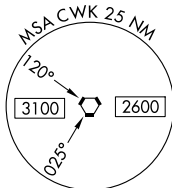
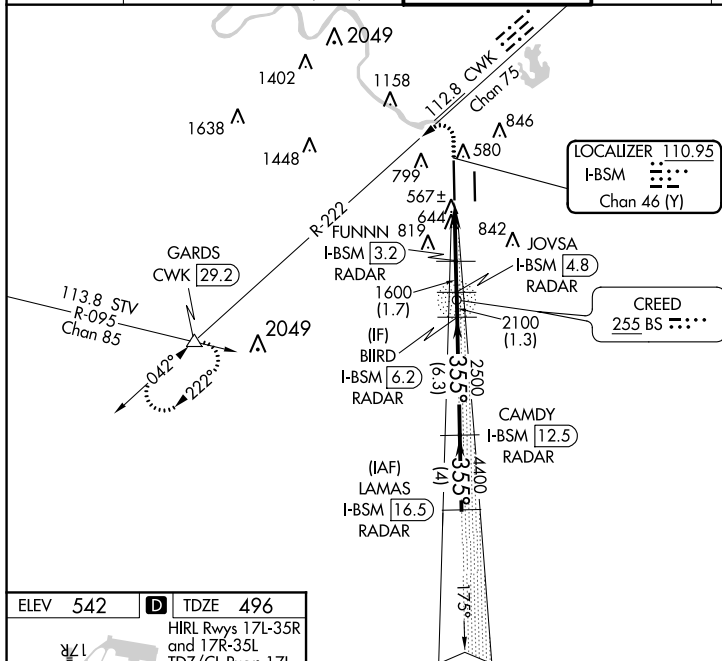
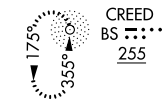


ILS or LOC RWY 35L  
AUSTIN-BERGSTROM INTL (AUS)

MALSR

**MISSED APPROACH:** Climb to 1000 then climbing left turn to 3500 on heading 250° and CWK VORTAC R-222 to GARDS INT/CWK 29.2 DME and hold.

ALTERNATE MISSED  
APCH FIX



1000 ↑	3500 hdg 250°	CWK R-222	GARDS △	VGSI and ILS glidepath not coincident (VGSI Angle 3.00°/TCH 60°)				LAMAS I-BSM 16.5 RADAR
*LOC only.		I-BSM DME ANTENNA	FUNNNN RADAR	JOVSA I-BSM 4.8	BIIRD RADAR	CAMDY I-BSM 12.5 RADAR	355°-5000 4400	GS 3.00° TCH 54
		I-BSM 0.2	*I-BSM RADAR 1600 0.9	1600	2100	2500		
		1.1 NM	2.2	1.7	1.3 NM	6.3 NM	4 NM	
CATEGORY	A	B		C		D	E	
S-ILS 35L**	696/24 200 (200-½)							
S-LOC 35L	900/24	404 (400-½)	900/40 404 (400-¾)					