

D-ATIS
124.4
CINC DEL
125.5 263.0
CPDLC
GND CON
121.9 348.6
AUSTIN TOWER
121.0 281.5
AUSTIN DEP CON
127.225 317.65

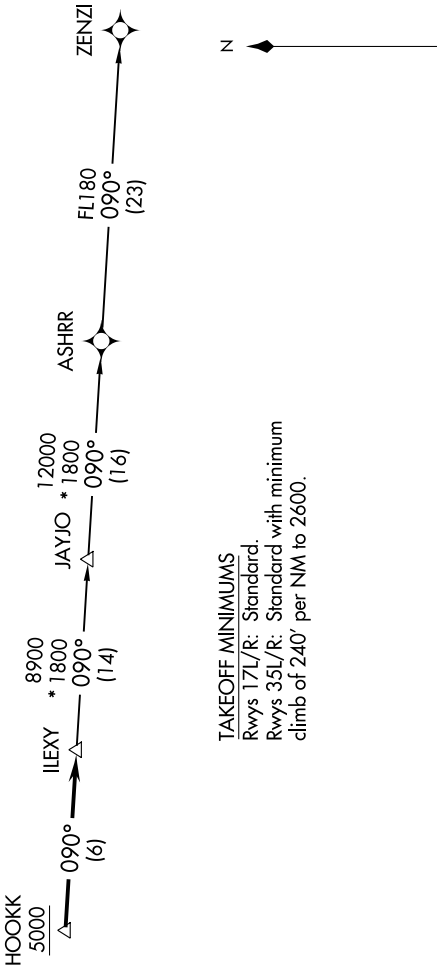
IILEXY2.IILEXY) 17341
IILEXY TWO DEPARTURE (RNAV)

AL-556 (FAA)

AUSTIN-BERGSTROM INTL (AUS)
AUSTIN, TEXAS

TOP ALTITUDE:
ASSIGNED BY ATC

- NOTE: RADAR required.
- NOTE: DME/DME/IRU or GPS required.
- NOTE: RNAV-1.
- NOTE: Houston terminal area arrivals expect routing from IILEXY.
- NOTE: JAYJO transition to join V306 only.



NOTE: Chart not to scale.

DEPARTURE ROUTE DESCRIPTION

TAKEOFF RWYS 17L/R: Climb heading 175° or as assigned by ATC for RADAR vectors to cross HOOKK at or above 5000, thence....
TAKEOFF RWYS 35L/R: Climb heading 355° or as assigned by ATC for RADAR vectors to cross HOOKK at or above 5000, thence....

... on track 90° to IILEXY, then on transition. Maintain altitude assigned by ATC.
Expect filed altitude 10 minutes after departure.

JAYJO TRANSITION (IILEXY2.JAYJO):
ZENZI TRANSITION (IILEXY2.ZENZI):

AUSTIN, TEXAS
AUSTIN-BERGSTROM INTL (AUS)