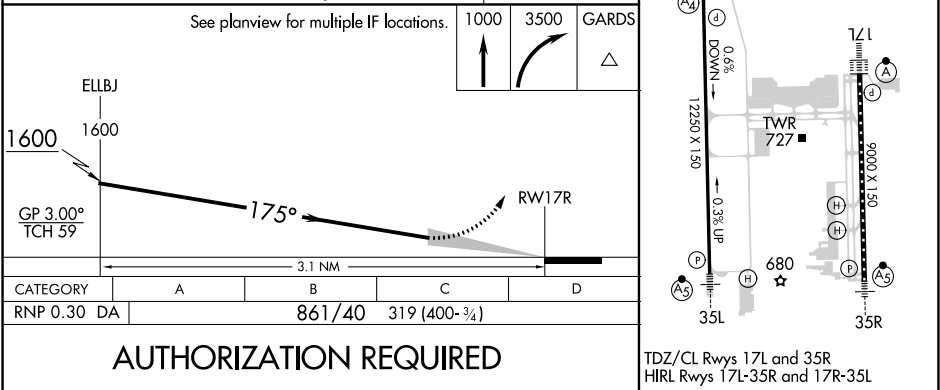
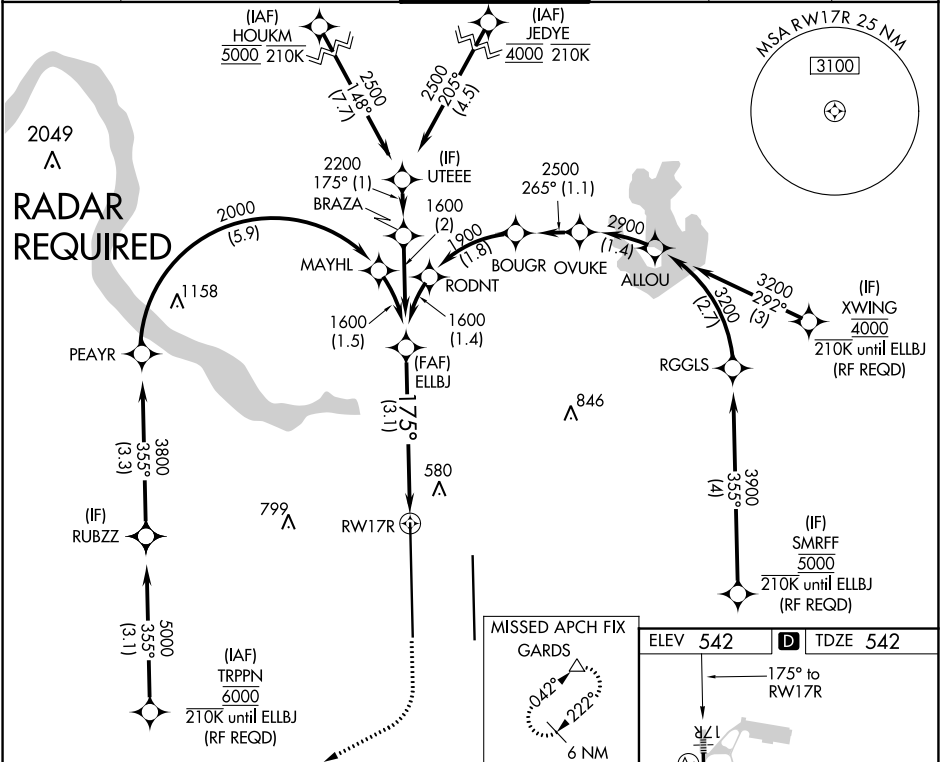


APP CRS	Rwy Idg	12250
175°	TDZE	542
	Apt Elev	542

RNAV (RNP) Z RWY 17R  
AUSTIN-BERGSTROM INTL (AUS)

For uncompensated Baro-VNAV systems, procedure NA below -6°C (22°F) or above 54°C (130°F). Simultaneous approach authorized. GPS required.	MAIS A4	MISSED APPROACH: Climb to 1000 then climbing right turn to 3500 direct GARDS and hold.
---	------------	--

D-ATIS 124.4	AUSTIN APP CON 127.225 317.65 (EAST) 120.875 270.25 (SOUTH) 119.0 370.85 (WEST)	AUSTIN TOWER 121.0 281.5	GND CON 121.9 348.6	CLNC DEL 125.5 263.0	CPDLC
-----------------	--	-----------------------------	------------------------	-------------------------	-------



SC-3, 03 DEC 2020 to 31 DEC 2020

SC-3, 03 DEC 2020 to 31 DEC 2020