

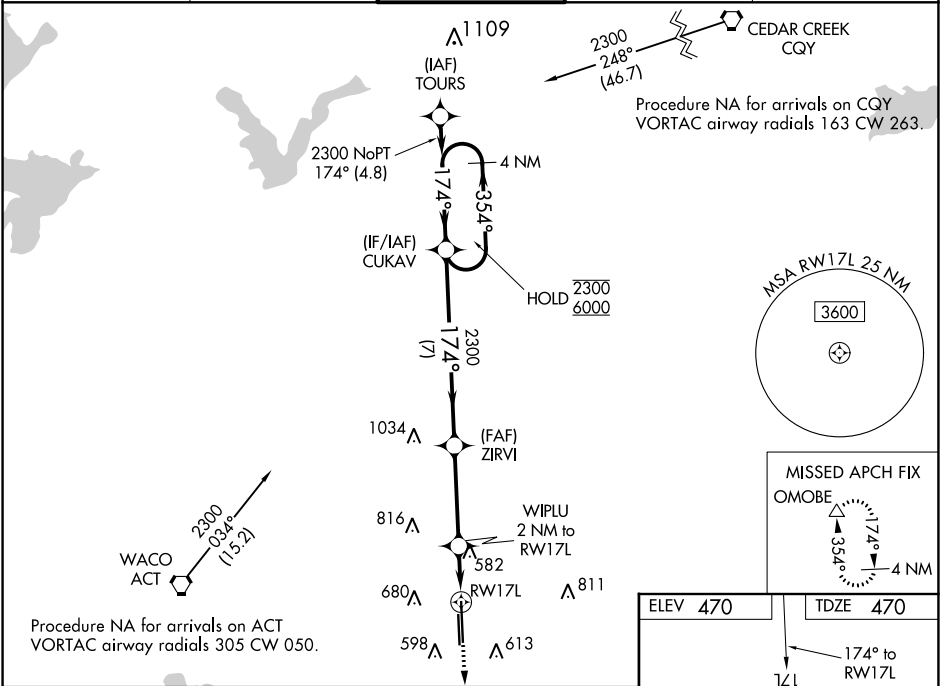
WAAS CH <b>73020</b> <b>W17A</b>	APP CRS <b>174°</b>	Rwy Idg TDZE Apt Elev	<b>8600</b> <b>470</b> <b>470</b>
--	------------------------	-----------------------------	---

RNAV (GPS) RWY 17L

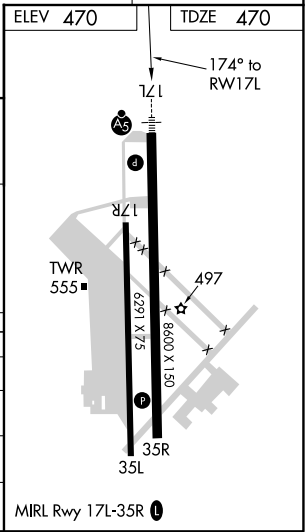
TSTC WACO (CNW)

RNP APCH.	MALSR	MISSED APPROACH: Climb to 2300 direct OMOBE and hold.
⚠ For uncompensated Baro-VNAV systems, LNAV/VNAV NA below -15°C or above 54°C. For inop ALS, increase LNAV/VNAV all Cats visibility to ¾ SM and LNAV Cats C/D visibility to 1 SM.	ASR	

AWOS-3 <b>134.225</b>	WACO APP CON ★ <b>127.65 227.125</b>	TSTC TOWER ★ <b>124.0 (CTAF) 255.7</b>	GND CON <b>121.7 0</b>	UNICOM <b>122.95</b>
--------------------------	---	---	---------------------------	-------------------------



4 NM Holding Pattern		CUKAV	ZIRVI	WIPLU	OMOBE
6000 ← 354°		174° →	2300	2 NM to RW17L	△
2300		174° →	2300	*1 NM to RW17L	
GP 3.00° TCH 52				*1140	
		7 NM	3.6 NM	1 NM	1 NM
CATEGORY	A	B	C	D	
LPV DA		670-½	200 (200-½)		
LNAV/VNAV DA		720-½	250 (300-½)		
LNAV MDA	840-½	370 (400-½)	840-⅝	370 (400-⅝)	
CIRCLING	940-1 470 (500-1)	1040-1 570 (600-1)	1040-1½ 570 (600-1½)	1120-2 650 (700-2)	



SC-3, 03 DEC 2020 to 31 DEC 2020

SC-3, 03 DEC 2020 to 31 DEC 2020