
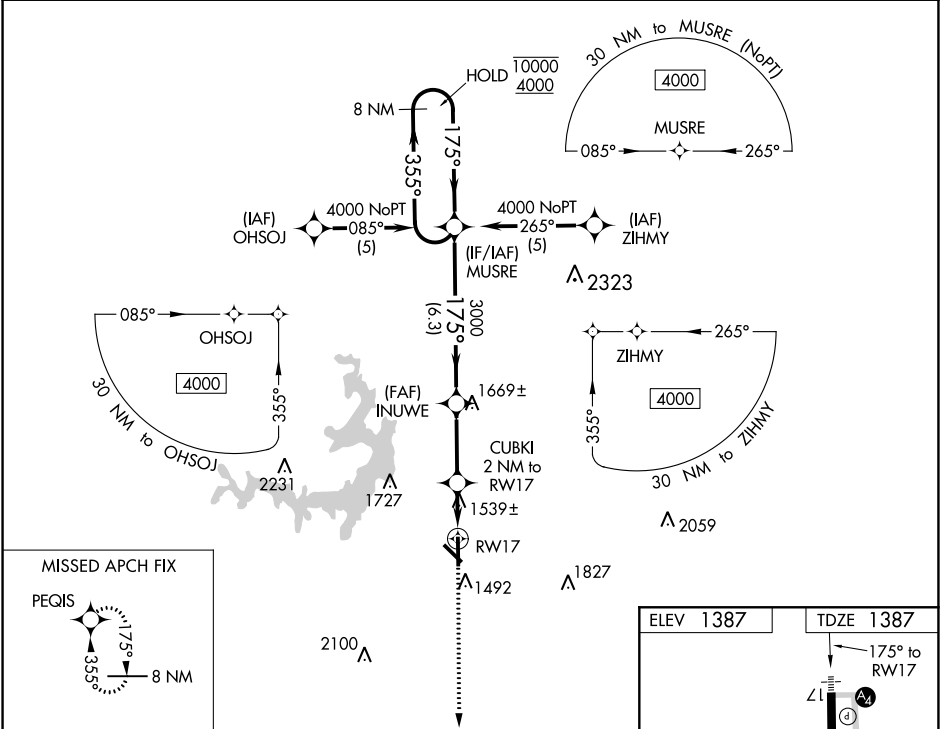


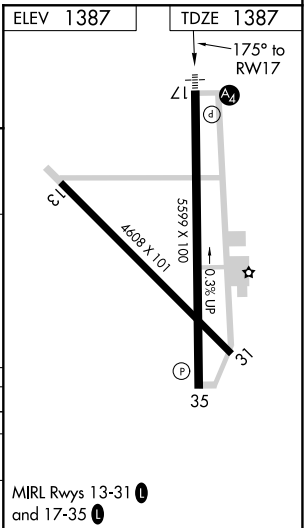
WAAS CH 70325 W17A	APP CRS 175°	Rwy Idg TDZE 1387 Apt Elev 1387	5599
--	------------------------	---	-------------

RNAV (GPS) RWY 17
BROWNWOOD RGNL (BWD)

RNP APCH.		MALSS 	MISSED APPROACH: Climb to 4000 direct PEGIS and hold.
▼ Rwy 17 helicopter visibility reduction below ¾ SM NA.			
AWOS-3 118.325	FORT WORTH CENTER 127.45 290.3	UNICOM 122.8(CTAF) 0	



VGSi and RNAV glidepath not coincident (VGSi Angle 3.00/TCH 55).				4000	PEGIS
8 NM Holding Pattern				*LNAV only.	
10000 ← 355° 4000 ← 175°				GP 3.00° TCH 52	
MUSRE				3000	
INUWE				CUBKI 2 NM to RW17	
1.1 NM to RW17				*2060	
6.3 NM				2.8 NM	
0.9				1.1	
CATEGORY	A	B	C	D	
LPV DA	1637-¾		250 (300-¾)		
LNAV MDA	1800-¾	413 (500-¾)	1800-1¼	413 (500-1¼)	
CIRCLING	1840-1	453 (500-1)	1840-1½	1940-2	
			453 (500-1½)	553 (600-2)	



SC-3, 03 DEC 2020 to 31 DEC 2020

SC-3, 03 DEC 2020 to 31 DEC 2020