

APP CRS	Rwy Idg	7257
131°	TDZE	35
	Apt Elev	36

RNAV (RNP) Z RWY 13

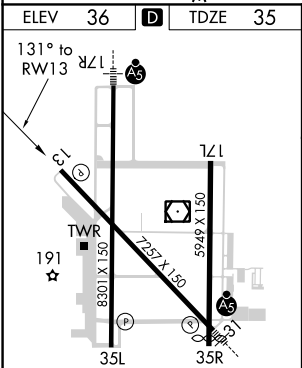
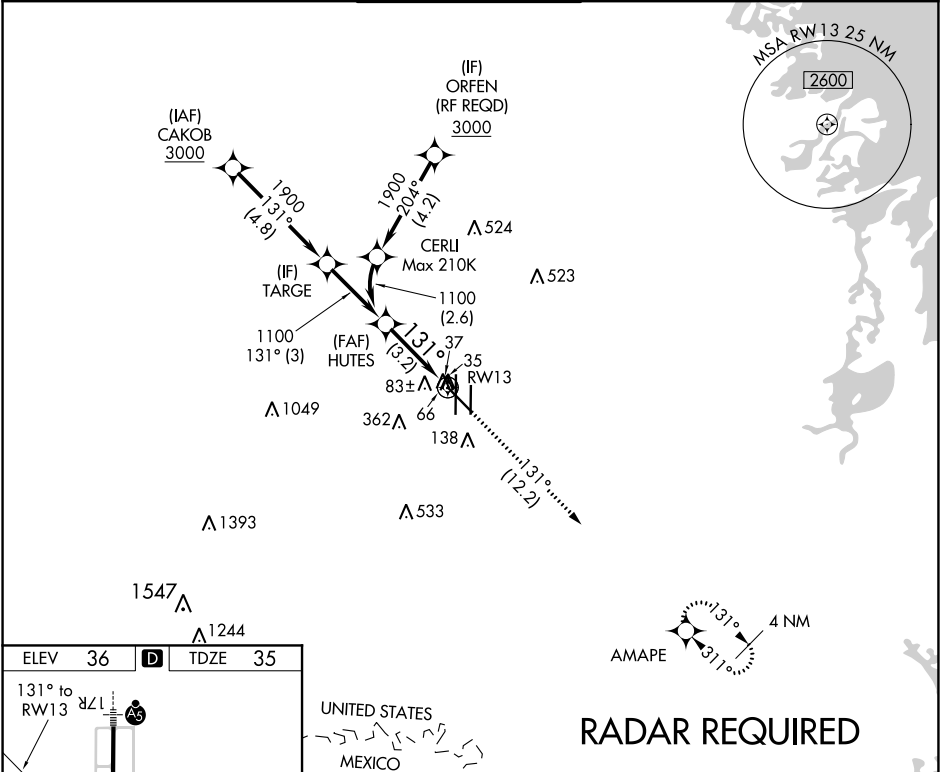
VALLEY INTL (HRL)

▼

For uncompensated Baro-VNAV systems, procedure NA below 2°C (36°F) or above 54°C (130°F). GPS required.

MISSED APPROACH: Climb to 2000 on track 131° to AMAPE and hold.

ATIS 124.85	VALLEY APP CON 120.7 279.5	HARLINGEN TOWER ★ 119.3 (CTAF) 0 317.6	GND CON 121.7	UNICOM 122.95
----------------	-------------------------------	---	------------------	------------------



MIRL Rwy 17L-35R  
REIL Rwy 13 and 17L  
HIRL Rwy 13-31 and 17R-35L

HARLINGEN, TEXAS  
Orig-A 02APR15

26°14'N-97°39'W

RADAR REQUIRED

HUTES

See planview for multiple IF locations.

2000 AMAPE

tr 131°

1100

131°

RWY 13

GP 3.00°

TCH 59

3.2 NM

CATEGORY	A	B	C	D
RNP 0.15 DA	302-7/8	267 (300-7/8)		
RNP 0.30 DA	393-1 1/8	358 (400-1 1/8)		

AUTHORIZATION REQUIRED

VALLEY INTL (HRL)

RNAV (RNP) Z RWY 13